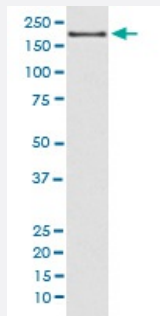


WHSC1L1 monoclonal antibody, clone FFH-23

Catalog # MAB20253 Size 100 uL

Applications



Western Blot (Cell lysate)

Western blot analysis of MCF-7 cell lysate with WHSC1L1 monoclonal antibody.

Specification

Product Description	Rabbit monoclonal antibody raised against synthetic peptide of human WHSC1L1.
Immunogen	A synthetic peptide corresponding to human WHSC1L1.
Host	Rabbit
Reactivity	Human
Form	Liquid
Purification	Affinity purification
Isotype	IgG
Recommend Usage	Flow Cytometry (1:30) Western Blot (1:1000-1:5000) The optimal working dilution should be determined by the end user.
Storage Buffer	In PBS, pH 7.4, 150mM NaCl, 0.02% sodium azide and 50% glycerol.
Storage Instruction	Store at -20°C for one year. After reconstitution, at 4°C for one month. It can also be aliquotted and stored frozen at -20°C for a longer time. Avoid repeated freezing and thawing.

Note

This product contains sodium azide: a POISONOUS AND HAZARDOUS SUBSTANCE which should be handled by trained staff only.

Applications

- Western Blot (Cell lysate)

Western blot analysis of MCF-7 cell lysate with WHSC1L1 monoclonal antibody.

- Flow Cytometry

Gene Info — WHSC1L1

Entrez GeneID	54904
Protein Accession#	Q9BZ95
Gene Name	WHSC1L1
Gene Alias	DKFZp667H044, FLJ20353, MGC126766, MGC142029, NSD3, pp14328
Gene Description	Wolf-Hirschhorn syndrome candidate 1-like 1
Omim ID	601626 607083
Gene Ontology	Hyperlink
Gene Summary	This gene is related to the Wolf-Hirschhorn syndrome candidate-1 gene and encodes a protein with PWWP (proline-tryptophan-tryptophan-proline) domains. The function of the protein has not been determined. Two alternatively spliced variants have been described. [provided by RefSeq]
Other Designations	WHSC1L1 protein Wolf-Hirschhorn syndrome candidate 1-like 1 protein

Pathway

- [Lysine degradation](#)