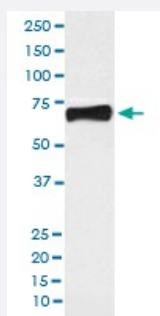


NR5A2 monoclonal antibody, clone ABHO-14

Catalog # MAB20251 Size 100 uL

Applications



Western Blot (Cell lysate)

Western blot analysis of MCF-7 cell lysate with NR5A2 monoclonal antibody.

Specification

Product Description	Rabbit monoclonal antibody raised against synthetic peptide of human NR5A2.
Immunogen	A synthetic peptide corresponding to human NR5A2.
Host	Rabbit
Reactivity	Human
Form	Liquid
Purification	Affinity purification
Isotype	IgG
Recommend Usage	Western Blot (1:500-1:2000) The optimal working dilution should be determined by the end user.
Storage Buffer	In PBS, pH 7.4, 150mM NaCl, 0.02% sodium azide and 50% glycerol.
Storage Instruction	Store at -20°C for one year. After reconstitution, at 4°C for one month. It can also be aliquotted and stored frozen at -20°C for a longer time. Avoid repeated freezing and thawing.

Note

This product contains sodium azide: a POISONOUS AND HAZARDOUS SUBSTANCE which should be handled by trained staff only.

Applications

- Western Blot (Cell lysate)

Western blot analysis of MCF-7 cell lysate with NR5A2 monoclonal antibody.

Gene Info — NR5A2

Entrez GeneID	2494
Protein Accession#	O00482
Gene Name	NR5A2
Gene Alias	B1F, B1F2, CPF, FTF, FTZ-F1, FTZ-F1beta, LRH-1, hB1F, hB1F-2
Gene Description	nuclear receptor subfamily 5, group A, member 2
Omim ID	604453
Gene Ontology	Hyperlink
Gene Summary	group A
Other Designations	CYP7A promoter-binding factor OTTHUMP00000033644 OTTHUMP00000033646 b1-binding factor, hepatocyte transcription factor which activates enhancer II of hepatitis B virus fetoprotein-alpha 1 (AFP) transcription factor liver receptor homolog 1 liver receptor

Pathway

- [Maturity onset diabetes of the young](#)

Disease

- [Carcinoma](#)
- [Cardiovascular Diseases](#)
- [Diabetes Mellitus](#)

- [Edema](#)
- [Genetic Predisposition to Disease](#)
- [Pancreatic Neoplasms](#)
- [Tobacco Use Disorder](#)