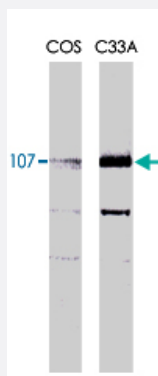


RBL1 monoclonal antibody, clone KAB6

Catalog # MAB2025 Size 100 ug

Applications



Western Blot (Cell lysate)

Rbl1 monoclonal antibody, clone KAB6 (Cat # MAB2025) recognizes both the phosphorylated and unphosphorylated forms of p107 at 107kDa. The primary antibody diluted at 1:1000.

Specification

Product Description	Mouse monoclonal antibody raised against partial recombinant RBL1.
Immunogen	Recombinant GST fusion protein corresponding to N-terminus of RBL1.
Host	Mouse
Theoretical MW (kDa)	107
Reactivity	Human, Mouse
Specificity	This antibody recognizes both the phosphorylated and unphosphorylated forms of p107 at MW of 107 KDa.
Form	Liquid
Isotype	IgG1
Quality Control Testing	Antibody Reactive Against Recombinant Protein.
Recommend Usage	Western blot (1:1000) The optimal working dilution should be determined by the end user.

Storage Buffer	In PBS (0.08% sodium azide)
Storage Instruction	Store at -20°C. Aliquot to avoid repeated freezing and thawing.
Note	This product contains sodium azide: a POISONOUS AND HAZARDOUS SUBSTANCE which should be handled by trained staff only.

Applications

- Western Blot (Cell lysate)

Rbl1 monoclonal antibody, clone KAB6 (Cat # MAB2025) recognizes both the phosphorylated and unphosphorylated forms of p107 at 107kDa. The primary antibody diluted at 1:1000.

Gene Info — Rbl1

Entrez GeneID	19650
Gene Name	Rbl1
Gene Alias	AW547426, PRB1, p107
Gene Description	retinoblastoma-like 1 (p107)
Gene Ontology	Hyperlink
Other Designations	OTTMUSP00000017311 retinoblastoma-like protein 1