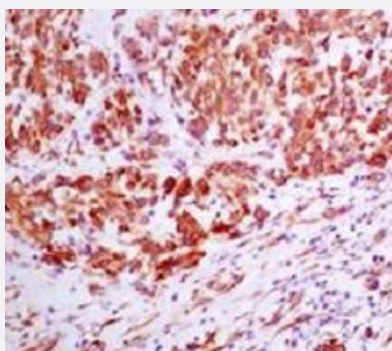


# NES monoclonal antibody, clone FBH-14

Catalog # MAB20234      Size 100 uL

## Applications



### Immunohistochemistry (Formalin/PFA-fixed paraffin-embedded sections)

Immunohistochemical staining of paraffin-embedded human melanoma tissue labeling Nestin with NES monoclonal antibody.

## Specification

**Product Description** Rabbit monoclonal antibody raised against synthetic peptide of human NES.

**Immunogen** A synthetic peptide corresponding to human NES.

**Host** Rabbit

**Reactivity** Human

**Form** Liquid

**Purification** Affinity purification

**Isotype** IgG

**Recommend Usage** Immunocytochemistry (1:50-1:200)  
Immunofluorescence (1:50-1:200)  
Immunohistochemistry (1:50-1:200)  
The optimal working dilution should be determined by the end user.

**Storage Buffer** In PBS, pH 7.4, 150mM NaCl, 0.02% sodium azide and 50% glycerol.

**Storage Instruction**

Store at -20°C for one year. After reconstitution, at 4°C for one month. It can also be aliquotted and stored frozen at -20°C for a longer time. Avoid repeated freezing and thawing.

**Note**

This product contains sodium azide: a POISONOUS AND HAZARDOUS SUBSTANCE which should be handled by trained staff only.

## Applications

- Immunohistochemistry (Formalin/PFA-fixed paraffin-embedded sections)  
Immunohistochemical staining of paraffin-embedded human melanoma tissue labeling Nestin with NES monoclonal antibody.
- Immunocytochemistry
- Immunofluorescence

## Gene Info — NES

**Entrez GeneID** [10763](#)

**Protein Accession#** [P48681](#)

**Gene Name** NES

**Gene Alias** FLJ21841, Nbla00170

**Gene Description** nestin

**Omim ID** [600915](#)

**Gene Ontology** [Hyperlink](#)

**Gene Summary** Nestin is an intermediate filament protein that was first identified with a monoclonal antibody by Hockfield and McKay (1985) [PubMed 4078630]. It is expressed predominantly in stem cells of the central nervous system in the neural tube. Upon terminal neural differentiation, nestin is downregulated and replaced by neurofilaments.[supplied by OMIM]

**Other Designations** OTTHUMP00000032198

## Disease

- [Atherosclerosis](#)

- [Coronary Disease](#)