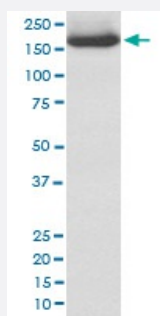


# NEFM monoclonal antibody, clone AAGI-14

Catalog # MAB20233      Size 100 uL

## Applications



### Western Blot (Cell lysate)

Western blot analysis of 293T cell lysate with NEFM monoclonal antibody.

## Specification

**Product Description** Rabbit monoclonal antibody raised against synthetic peptide of human NEFM.

**Immunogen** A synthetic peptide corresponding to human NEFM.

**Host** Rabbit

**Reactivity** Human

**Form** Liquid

**Purification** Affinity purification

**Isotype** IgG

**Recommend Usage**

- Immunocytochemistry (1:50-1:200)
- Immunofluorescence (1:50-1:200)
- Immunohistochemistry (1:50-1:200)
- Immunoprecipitation (1:20)
- Western Blot (1:1000-1:5000)
- The optimal working dilution should be determined by the end user.

**Storage Buffer** In PBS, pH 7.4, 150mM NaCl, 0.02% sodium azide and 50% glycerol.

**Storage Instruction**

Store at -20°C for one year. After reconstitution, at 4°C for one month. It can also be aliquotted and stored frozen at -20°C for a longer time. Avoid repeated freezing and thawing.

**Note**

This product contains sodium azide: a POISONOUS AND HAZARDOUS SUBSTANCE which should be handled by trained staff only.

## Applications

- Western Blot (Cell lysate)

Western blot analysis of 293T cell lysate with NEFM monoclonal antibody.

- Immunohistochemistry (Formalin/PFA-fixed paraffin-embedded sections)

- Immunocytochemistry

- Immunofluorescence

- Immunoprecipitation

## Gene Info — NEFM

**Entrez GeneID**[4741](#)**Protein Accession#**[P07197](#)**Gene Name**

NEFM

**Gene Alias**

NEF3, NF-M, NFM

**Gene Description**

neurofilament, medium polypeptide

**Omim ID**[162250](#)**Gene Ontology**[Hyperlink](#)**Gene Summary**

Neurofilaments are type IV intermediate filament heteropolymers composed of light, medium, and heavy chains. Neurofilaments comprise the axoskeleton and functionally maintain neuronal caliber. They may also play a role in intracellular transport to axons and dendrites. This gene encodes the medium neurofilament protein. This protein is commonly used as a biomarker of neuronal damage. Alternative splicing results in multiple transcript variants encoding distinct isoforms. [provided by RefSeq]

**Other Designations**

neurofilament triplet M protein|neurofilament, medium polypeptide 150kDa|neurofilament-3 (150 kD medium)

## Pathway

- [Amyotrophic lateral sclerosis \(ALS\)](#)

## Disease

- [Acute Disease](#)
- [Genetic Predisposition to Disease](#)
- [Parkinson disease](#)
- [Psychiatric Status Rating Scales](#)
- [Schizophrenia](#)
- [Schizophrenic Psychology](#)