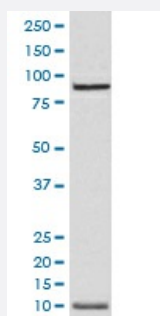


NEDD8 monoclonal antibody, clone AOAE-14

Catalog # MAB20231 Size 100 uL

Applications



Western Blot (Cell lysate)

Western blot analysis of K562 cell lysate with NEDD8 monoclonal antibody.

Specification

Product Description Rabbit monoclonal antibody raised against synthetic peptide of human NEDD8.

Immunogen A synthetic peptide corresponding to human NEDD8.

Host Rabbit

Reactivity Human

Form Liquid

Purification Affinity purification

Isotype IgG

Recommend Usage

- Immunocytochemistry (1:50-1:200)
- Immunofluorescence (1:50-1:200)
- Immunohistochemistry (1:50-1:200)
- Immunoprecipitation (1:20)
- Western Blot (1:500-1:2000)
- The optimal working dilution should be determined by the end user.

Storage Buffer In PBS, pH 7.4, 150mM NaCl, 0.02% sodium azide and 50% glycerol.

Storage Instruction

Store at -20°C for one year. After reconstitution, at 4°C for one month. It can also be aliquotted and stored frozen at -20°C for a longer time. Avoid repeated freezing and thawing.

Note

This product contains sodium azide: a POISONOUS AND HAZARDOUS SUBSTANCE which should be handled by trained staff only.

Applications

- Western Blot (Cell lysate)

Western blot analysis of K562 cell lysate with NEDD8 monoclonal antibody.

- Immunohistochemistry (Formalin/PFA-fixed paraffin-embedded sections)

- Immunocytochemistry

- Immunofluorescence

- Immunoprecipitation

Gene Info — NEDD8

Entrez GeneID[4738](#)**Protein Accession#**[Q15843](#)**Gene Name**

NEDD8

Gene Alias

FLJ43224, MGC104393, MGC125896, MGC125897, Nedd-8

Gene Description

neural precursor cell expressed, developmentally down-regulated 8

Omim ID[603171](#)**Gene Ontology**[Hyperlink](#)**Gene Summary**

O

Other Designations

-