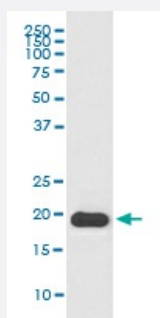


MYL2 monoclonal antibody, clone FHO-13

Catalog # MAB20225 Size 100 uL

Applications



Western Blot (Cell lysate)

Western blot analysis of mouse heart lysate with MYL2 monoclonal antibody.

Specification

Product Description Rabbit monoclonal antibody raised against synthetic peptide of human MYL2.

Immunogen A synthetic peptide corresponding to human MYL2.

Host Rabbit

Reactivity Human, Mouse

Form Liquid

Purification Affinity purification

Isotype IgG

Recommend Usage
Immunohistochemistry (1:50-1:200)
Immunoprecipitation (1:50)
Western Blot (1:1000-1:5000)
The optimal working dilution should be determined by the end user.

Storage Buffer In PBS, pH 7.4, 150mM NaCl, 0.02% sodium azide and 50% glycerol.

Storage Instruction Store at -20°C for one year. After reconstitution, at 4°C for one month. It can also be aliquotted and stored frozen at -20°C for a longer time. Avoid repeated freezing and thawing.

Note

This product contains sodium azide: a POISONOUS AND HAZARDOUS SUBSTANCE which should be handled by trained staff only.

Applications

- Western Blot (Cell lysate)

Western blot analysis of mouse heart lysate with MYL2 monoclonal antibody.

- Immunohistochemistry (Formalin/PFA-fixed paraffin-embedded sections)

- Immunoprecipitation

Gene Info — MYL2

Entrez GeneID [4633](#)

Protein Accession# [P10916](#)

Gene Name MYL2

Gene Alias CMH10, DKFZp779C0562, MLC2

Gene Description myosin, light chain 2, regulatory, cardiac, slow

Omim ID [160781](#) [608758](#)

Gene Ontology [Hyperlink](#)

Gene Summary Thus gene encodes the regulatory light chain associated with cardiac myosin beta (or slow) heavy chain. Ca⁺ triggers the phosphorylation of regulatory light chain that in turn triggers contraction. Mutations in this gene are associated with mid-left ventricular chamber type hypertrophic cardiomyopathy. [provided by RefSeq]

Other Designations RLC of myosin|cardiac ventricular myosin light chain 2|myosin light chain 2|myosin regulatory light chain 2, ventricular/cardiac muscle isoform|myosin, light polypeptide 2, regulatory, cardiac, slow|regulatory light chain of myosin|slow cardiac myosin reg

Pathway

- [Focal adhesion](#)

- [Hypertrophic cardiomyopathy \(HCM\)](#)

- [Leukocyte transendothelial migration](#)
- [Regulation of actin cytoskeleton](#)
- [Tight junction](#)

Disease

- [Cardiomegaly](#)
- [Cardiomyopathy](#)
- [Cleft Lip](#)
- [Cleft Palate](#)
- [Genetic Predisposition to Disease](#)