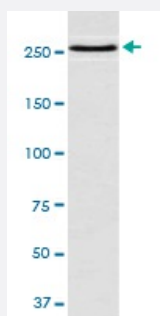


MTOR monoclonal antibody, clone CBD-13

Catalog # MAB20212 Size 100 uL

Applications



Western Blot (Cell lysate)

Western blot analysis of Jurkat cell lysate with MTOR monoclonal antibody.

Specification

Product Description Rabbit monoclonal antibody raised against synthetic peptide of human MTOR.

Immunogen A synthetic peptide corresponding to human MTOR.

Host Rabbit

Reactivity Human

Form Liquid

Purification Affinity purification

Isotype IgG

Recommend Usage

- Flow Cytometry (1:20)
- Immunocytochemistry (1:50-1:100)
- Immunofluorescence (1:50-1:100)
- Immunohistochemistry (1:50-1:100)
- Immunoprecipitation (1:30)
- Western Blot (1:500-1:1000)
- The optimal working dilution should be determined by the end user.

Storage Buffer In PBS, pH 7.4, 150mM NaCl, 0.02% sodium azide and 50% glycerol.

Storage Instruction

Store at -20°C for one year. After reconstitution, at 4°C for one month. It can also be aliquotted and stored frozen at -20°C for a longer time. Avoid repeated freezing and thawing.

Note

This product contains sodium azide: a POISONOUS AND HAZARDOUS SUBSTANCE which should be handled by trained staff only.

Applications

- Western Blot (Cell lysate)

Western blot analysis of Jurkat cell lysate with MTOR monoclonal antibody.

- Immunohistochemistry (Formalin/PFA-fixed paraffin-embedded sections)

- Immunocytochemistry

- Immunofluorescence

- Immunoprecipitation

- Flow Cytometry

Gene Info — MTOR

Entrez GeneID[2475](#)**Protein Accession#**[P42345](#)**Gene Name**

MTOR

Gene Alias

FRAP, FRAP1, FRAP2, RAFT1, RAPT1

Gene Description

mechanistic target of rapamycin

Omim ID[601231](#)**Gene Ontology**[Hyperlink](#)**Gene Summary**

The protein encoded by this gene belongs to a family of phosphatidylinositol kinase-related kinases. These kinases mediate cellular responses to stresses such as DNA damage and nutrient deprivation. This protein acts as the target for the cell-cycle arrest and immunosuppressive effects of the FKBP12-rapamycin complex. The ANGPTL7 gene is located in an intron of this gene. [provided by RefSeq]

Other Designations

FK506 binding protein 12-rapamycin associated protein 1|FK506 binding protein 12-rapamycin associated protein 2|FK506-binding protein 12-rapamycin complex-associated protein 1|FKBP-rapamycin associated protein|FKBP12-rapamycin complex-associated protein 1

Pathway

- [Acute myeloid leukemia](#)
- [Adipocytokine signaling pathway](#)
- [ErbB signaling pathway](#)
- [Glioma](#)
- [Insulin signaling pathway](#)
- [mTOR signaling pathway](#)
- [Pathways in cancer](#)
- [Prostate cancer](#)
- [Type II diabetes mellitus](#)

Disease

- [Adenocarcinoma](#)
- [Alzheimer disease](#)
- [Cardiovascular Diseases](#)
- [Colonic Neoplasms](#)
- [Diabetes Complications](#)
- [Esophageal Neoplasms](#)
- [Kidney Failure](#)
- [Metabolic Syndrome X](#)
- [Neoplasms](#)
- [Osteoporosis](#)
- [Rectal Neoplasms](#)

- [Tobacco Use Disorder](#)