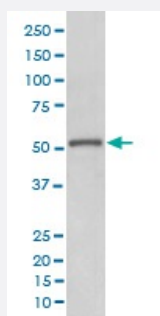


MMP11 monoclonal antibody, clone GDF-13

Catalog # MAB20195 Size 100 uL

Applications



Western Blot (Cell lysate)

Western blot analysis of MCF-7 cell lysate with MMP11 monoclonal antibody.

Specification

Product Description Rabbit monoclonal antibody raised against synthetic peptide of human MMP11.

Immunogen A synthetic peptide corresponding to human MMP11.

Host Rabbit

Reactivity Human

Form Liquid

Purification Affinity purification

Isotype IgG

Recommend Usage

- Immunocytochemistry (1:50-1:200)
- Immunofluorescence (1:50-1:200)
- Immunohistochemistry (1:50-1:200)
- Western Blot (1:500-1:1000)
- The optimal working dilution should be determined by the end user.

Storage Buffer In PBS, pH 7.4, 150mM NaCl, 0.02% sodium azide and 50% glycerol.

Storage Instruction

Store at -20°C for one year. After reconstitution, at 4°C for one month. It can also be aliquotted and stored frozen at -20°C for a longer time. Avoid repeated freezing and thawing.

Note

This product contains sodium azide: a POISONOUS AND HAZARDOUS SUBSTANCE which should be handled by trained staff only.

Applications

- Western Blot (Cell lysate)

Western blot analysis of MCF-7 cell lysate with MMP11 monoclonal antibody.

- Immunohistochemistry (Formalin/PFA-fixed paraffin-embedded sections)

- Immunocytochemistry

- Immunofluorescence

Gene Info — MMP11

Entrez GeneID[4320](#)**Protein Accession#**[P24347](#)**Gene Name**

MMP11

Gene Alias

SL-3, ST3, STMY3

Gene Description

matrix metalloproteinase 11 (stromelysin 3)

Omim ID[185261](#)**Gene Ontology**[Hyperlink](#)**Gene Summary**

Proteins of the matrix metalloproteinase (MMP) family are involved in the breakdown of extracellular matrix in normal physiological processes, such as embryonic development, reproduction, and tissue remodeling, as well as in disease processes, such as arthritis and metastasis. Most MMP's are secreted as inactive proproteins which are activated when cleaved by extracellular proteinases. However, the enzyme encoded by this gene is activated intracellularly by furin within the constitutive secretory pathway. Also in contrast to other MMP's, this enzyme cleaves alpha 1-proteinase inhibitor but weakly degrades structural proteins of the extracellular matrix. [provided by RefSeq]

Other Designations

matrix metalloproteinase 11|matrix metalloproteinase 11 (stromelysin 3)|stromelysin 3|stromelysin III

Disease

- [Cardiovascular Diseases](#)
- [Chorioamnionitis](#)
- [Diabetes Mellitus](#)
- [Disease Progression](#)
- [Edema](#)
- [Fetal Membranes](#)
- [Genetic Predisposition to Disease](#)
- [Hepatitis C](#)
- [Liver Cirrhosis](#)
- [Mucocutaneous Lymph Node Syndrome](#)
- [Obstetric Labor](#)
- [Pre-Eclampsia](#)
- [Premature Birth](#)