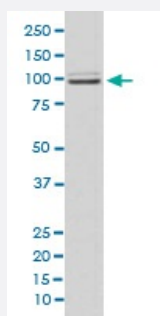


KIF23 monoclonal antibody, clone EG-11

Catalog # MAB20190

Size 100 uL

Applications



Western Blot (Cell lysate)

Western blot analysis of HeLa cell lysate with KIF23 monoclonal antibody.

Specification

Product Description Rabbit monoclonal antibody raised against synthetic peptide of human KIF23.

Immunogen A synthetic peptide corresponding to human KIF23.

Host Rabbit

Reactivity Human

Form Liquid

Purification Affinity purification

Isotype IgG

Recommend Usage
Immunocytochemistry (1:50-1:200)
Immunofluorescence (1:50-1:200)
Western Blot (1:500-1:2000)
The optimal working dilution should be determined by the end user.

Storage Buffer In PBS, pH 7.4, 150mM NaCl, 0.02% sodium azide and 50% glycerol.

Storage Instruction Store at -20°C for one year. After reconstitution, at 4°C for one month. It can also be aliquotted and stored frozen at -20°C for a longer time. Avoid repeated freezing and thawing.

Note

This product contains sodium azide: a POISONOUS AND HAZARDOUS SUBSTANCE which should be handled by trained staff only.

Applications

- Western Blot (Cell lysate)

Western blot analysis of HeLa cell lysate with KIF23 monoclonal antibody.

- Immunocytochemistry

- Immunofluorescence

Gene Info — KIF23

Entrez GeneID	9493
---------------	----------------------

Protein Accession#	Q02241
--------------------	------------------------

Gene Name	KIF23
-----------	-------

Gene Alias	CHO1, KNSL5, MKLP-1, MKLP1
------------	----------------------------

Gene Description	kinesin family member 23
------------------	--------------------------

Omim ID	605064
---------	------------------------

Gene Ontology	Hyperlink
---------------	---------------------------

Gene Summary	The protein encoded by this gene is a member of kinesin-like protein family. This family includes microtubule-dependent molecular motors that transport organelles within cells and move chromosomes during cell division. This protein has been shown to cross-bridge antiparallel microtubules and drive microtubule movement in vitro. Alternate splicing of this gene results in two transcript variants encoding two different isoforms. [provided by RefSeq]
--------------	--

Other Designations	kinesin-like 5 (mitotic kinesin-like protein 1) mitotic kinesin-like 1
--------------------	--