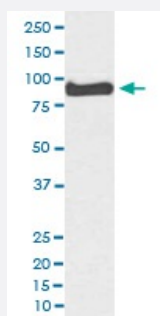


MFN1 monoclonal antibody, clone AOOG-13

Catalog # MAB20189 Size 100 uL

Applications



Western Blot (Cell lysate)

Western blot analysis of K562 cell lysate with MFN1 monoclonal antibody.

Specification

Product Description	Rabbit monoclonal antibody raised against synthetic peptide of human MFN1.
Immunogen	A synthetic peptide corresponding to human MFN1.
Host	Rabbit
Reactivity	Human
Form	Liquid
Purification	Affinity purification
Isotype	IgG
Recommend Usage	Flow Cytometry (1:20) Immunoprecipitation (1:20) Western Blot (1:1000-1:5000) The optimal working dilution should be determined by the end user.
Storage Buffer	In PBS, pH 7.4, 150mM NaCl, 0.02% sodium azide and 50% glycerol.
Storage Instruction	Store at -20°C for one year. After reconstitution, at 4°C for one month. It can also be aliquotted and stored frozen at -20°C for a longer time. Avoid repeated freezing and thawing.

Note

This product contains sodium azide: a POISONOUS AND HAZARDOUS SUBSTANCE which should be handled by trained staff only.

Applications

- Western Blot (Cell lysate)

Western blot analysis of K562 cell lysate with MFN1 monoclonal antibody.

- Immunoprecipitation

- Flow Cytometry

Gene Info — MFN1

Entrez GeneID	55669
---------------	-----------------------

Protein Accession#	Q8IWA4
--------------------	------------------------

Gene Name	MFN1
-----------	------

Gene Alias	DKFZp762F247, FLJ20693, MGC41806, hfzo1, hfzo2
------------	--

Gene Description	mitofusin 1
------------------	-------------

Omim ID	608506
---------	------------------------

Gene Ontology	Hyperlink
---------------	---------------------------

Gene Summary	The protein encoded by this gene is a mediator of mitochondrial fusion. This protein and mitofusin 2 are homologs of the Drosophila protein fuzzy onion (Fzo). They are mitochondrial membrane proteins that interact with each other to facilitate mitochondrial targeting. [provided by RefSeq]
--------------	---

Other Designations	mitochondrial transmembrane GTPase FZO-2 mitochondrial transmembrane GTPase Fzo-1 putative transmembrane GTPase
--------------------	---

Disease

- [Genetic Predisposition to Disease](#)

- [Glaucoma](#)