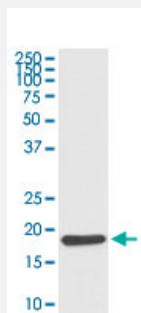


HSPB6 monoclonal antibody, clone IAD-8

Catalog # MAB20180 Size 100 uL

Applications



Western Blot (Tissue lysate)

Western Blot (Tissue lysate) analysis of mouse skeletal muscle lysate.

Specification

Product Description Rabbit monoclonal antibody raised against synthetic peptide of human HSPB6.

Immunogen A synthetic peptide corresponding to human HSPB6.

Host Rabbit

Reactivity Human, Mouse, Rat

Form Liquid

Purification Affinity purification

Isotype IgG

Recommend Usage
Flow Cytometry (1:50)
Immunohistochemistry (Formalin/PFA-fixed paraffin-embedded sections) (1:50-200)
Western Blot (1:5000-10000)
The optimal working dilution should be determined by the end user.

Storage Buffer In PBS, 150 mM NaCl, pH 7.4 (50% glycerol, 0.02% sodium azide).

Storage Instruction Store at -20°C for one year. After reconstitution, at 4°C for one month. It can also be aliquotted and stored frozen at -20°C for a longer time. Avoid repeated freezing and thawing.

Note

This product contains sodium azide: a POISONOUS AND HAZARDOUS SUBSTANCE which should be handled by trained staff only.

Applications

- Western Blot (Tissue lysate)

Western Blot (Tissue lysate) analysis of mouse skeletal muscle lysate.

- Immunohistochemistry (Formalin/PFA-fixed paraffin-embedded sections)
- Flow Cytometry

Gene Info — HSPB6

Entrez GeneID [126393](#)

Protein Accession# [O14558](#)

Gene Name HSPB6

Gene Alias FLJ32389, Hsp20

Gene Description heat shock protein, alpha-crystallin-related, B6

Omim ID [610695](#)

Gene Ontology [Hyperlink](#)

Gene Summary HSPB6 is associated with actin (see MIM 102540) and modulates smooth muscle relaxation (Tessier et al., 2003 [PubMed 12842460]).[supplied by OMIM]

Other Designations -

Disease

- [Cardiomyopathy](#)