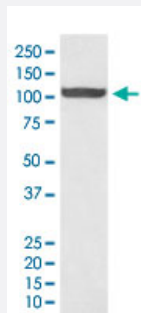


# HSPH1 monoclonal antibody, clone IOG-8

Catalog # MAB20179      Size 100 uL

## Applications



### Western Blot (Cell lysate)

Western Blot (Cell lysate) analysis of HeLa cell lysate.

## Specification

<b>Product Description</b>	Rabbit monoclonal antibody raised against synthetic peptide of human HSPH1.
<b>Immunogen</b>	A synthetic peptide corresponding to human HSPH1.
<b>Host</b>	Rabbit
<b>Reactivity</b>	Human, Mouse, Rat
<b>Form</b>	Liquid
<b>Purification</b>	Affinity purification
<b>Isotype</b>	IgG
<b>Recommend Usage</b>	Immunoprecipitation (1:50) Immunocytochemistry (1:50-200) Immunofluorescence (1:50-200) Immunohistochemistry (Formalin/PFA-fixed paraffin-embedded sections) (1:50-200) Western Blot (1:500-2000) The optimal working dilution should be determined by the end user.
<b>Storage Buffer</b>	In PBS, 150 mM NaCl, pH 7.4 (50% glycerol, 0.02% sodium azide).

**Storage Instruction**

Store at -20°C for one year. After reconstitution, at 4°C for one month. It can also be aliquotted and stored frozen at -20°C for a longer time. Avoid repeated freezing and thawing.

**Note**

This product contains sodium azide: a POISONOUS AND HAZARDOUS SUBSTANCE which should be handled by trained staff only.

## Applications

- Western Blot (Cell lysate)

Western Blot (Cell lysate) analysis of HeLa cell lysate.

- Immunohistochemistry (Formalin/PFA-fixed paraffin-embedded sections)

- Immunocytochemistry

- Immunofluorescence

- Immunoprecipitation

## Gene Info — HSPH1

**Entrez GeneID**[10808](#)**Protein Accession#**[Q92598](#)**Gene Name**

HSPH1

**Gene Alias**

DKFZp686M05240, HSP105, HSP105A, HSP105B, KIAA0201, NY-CO-25

**Gene Description**

heat shock 105kDa/110kDa protein 1

**Omim ID**[610703](#)**Gene Ontology**[Hyperlink](#)**Other Designations**

OTTHUMP00000018208|heat shock 105kD|heat shock 105kD alpha|heat shock 105kD beta|heat shock 105kDa protein 1