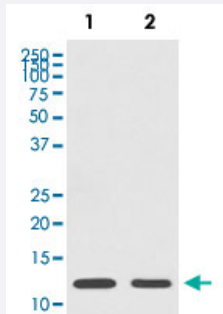


HIST1H4A monoclonal antibody, clone HDC-8

Catalog # MAB20165 Size 100 uL

Applications



Western Blot

Western Blot analysis of (1) HeLa, (2) 3T3 cell lysate.

Specification

Product Description	Rabbit monoclonal antibody raised against synthetic peptide of human HIST1H4A.
Immunogen	A synthetic peptide corresponding to human HIST1H4A.
Host	Rabbit
Reactivity	Human, Mouse, Rat
Form	Liquid
Purification	Affinity purification
Isotype	IgG
Recommend Usage	ChIP Flow Cytometry (1:50) Immunoprecipitation (1:50) Immunocytochemistry (1:50-200) Immunofluorescence (1:50-200) Immunohistochemistry (Formalin/PFA-fixed paraffin-embedded sections) (1:100-500) Western Blot (1:500-1000) The optimal working dilution should be determined by the end user.

Storage Buffer	In PBS, 150 mM NaCl, pH 7.4 (50% glycerol, 0.02% sodium azide).
Storage Instruction	Store at -20°C for one year. After reconstitution, at 4°C for one month. It can also be aliquotted and stored frozen at -20°C for a longer time. Avoid repeated freezing and thawing.
Note	This product contains sodium azide: a POISONOUS AND HAZARDOUS SUBSTANCE which should be handled by trained staff only.

Applications

- ChIP
- Western Blot
Western Blot analysis of (1) HeLa, (2) 3T3 cell lysate.
- Immunohistochemistry (Formalin/PFA-fixed paraffin-embedded sections)
- Immunocytochemistry
- Immunofluorescence
- Immunoprecipitation
- Flow Cytometry

Gene Info — HIST1H4A

Entrez GeneID	8359
Protein Accession#	P62805
Gene Name	HIST1H4A
Gene Alias	H4/a, H4FA
Gene Description	histone cluster 1, H4a
Omim ID	602822
Gene Ontology	Hyperlink

Gene Summary

Histones are basic nuclear proteins that are responsible for the nucleosome structure of the chromosomal fiber in eukaryotes. Two molecules of each of the four core histones (H2A, H2B, H3, and H4) form an octamer, around which approximately 146 bp of DNA is wrapped in repeating units, called nucleosomes. The linker histone, H1, interacts with linker DNA between nucleosomes and functions in the compaction of chromatin into higher order structures. This gene is intronless and encodes a member of the histone H4 family. Transcripts from this gene lack polyA tails but instead contain a palindromic termination element. This gene is found in the large histone gene cluster on chromosome 6. [provided by RefSeq]

Other Designations

H4 histone family, member A|histone 1, H4a

Pathway

- [Systemic lupus erythematosus](#)