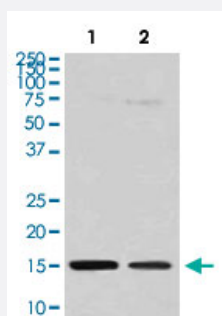


# HIST1H3A (mono methyl R128) monoclonal antibody, clone DEC-8

Catalog # MAB20156      Size 100 uL

## Applications



### Western Blot

Western Blot analysis of (1) HeLa, (2) NIH/3T3 cell lysate.

## Specification

<b>Product Description</b>	Rabbit monoclonal antibody raised against synthetic peptide of human HIST1H3A (mono methyl R128).
<b>Immunogen</b>	A synthetic peptide corresponding to human HIST1H3A (mono methyl R128).
<b>Host</b>	Rabbit
<b>Reactivity</b>	Human, Mouse
<b>Form</b>	Liquid
<b>Purification</b>	Affinity purification
<b>Isotype</b>	IgG
<b>Recommend Usage</b>	Western Blot (1:500-2000) The optimal working dilution should be determined by the end user.
<b>Storage Buffer</b>	In PBS, 150 mM NaCl, pH 7.4 (50% glycerol, 0.02% sodium azide).

**Storage Instruction**

Store at -20°C for one year. After reconstitution, at 4°C for one month. It can also be aliquotted and stored frozen at -20°C for a longer time. Avoid repeated freezing and thawing.

**Note**

This product contains sodium azide: a POISONOUS AND HAZARDOUS SUBSTANCE which should be handled by trained staff only.

## Applications

- Western Blot

Western Blot analysis of (1) HeLa, (2) NIH/3T3 cell lysate.

## Gene Info — HIST1H3A

**Entrez GeneID**[8350](#)**Protein Accession#**[P68431](#)**Gene Name**

HIST1H3A

**Gene Alias**

H3/A, H3FA

**Gene Description**

histone cluster 1, H3a

**Omim ID**[602810](#)**Gene Ontology**[Hyperlink](#)**Gene Summary**

Histones are basic nuclear proteins that are responsible for the nucleosome structure of the chromosomal fiber in eukaryotes. This structure consists of approximately 146 bp of DNA wrapped around a nucleosome, an octamer composed of pairs of each of the four core histones (H2A, H2B, H3, and H4). The chromatin fiber is further compacted through the interaction of a linker histone, H1, with the DNA between the nucleosomes to form higher order chromatin structures. This gene is intronless and encodes a member of the histone H3 family. Transcripts from this gene lack polyA tails; instead, they contain a palindromic termination element. This gene is found in the large histone gene cluster on chromosome 6p22-p21.3. [provided by RefSeq]

**Other Designations**

H3 histone family, member A|histone 1, H3a

## Pathway

- [Systemic lupus erythematosus](#)