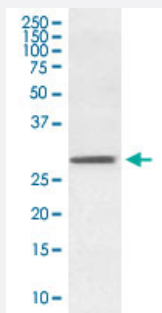


HES1 monoclonal antibody, clone FBB-8

Catalog # MAB20137 Size 100 uL

Applications



Western Blot (Cell lysate)

Western Blot analysis of SH-SY5Y cell lysate with HES1 monoclonal antibody, clone FBB-8 (Cat # MAB20137).

Specification

Product Description Rabbit monoclonal antibody raised against synthetic peptide of human HES1.

Immunogen A synthetic peptide corresponding to human HES1.

Host Rabbit

Theoretical MW (kDa) 29.541

Reactivity Human

Form Liquid

Purification Affinity purification

Isotype IgG

Recommend Usage

- Flow Cytometry (1:50)
- Immunocytochemistry (1:50-1:200)
- Immunofluorescence (1:50-1:200)
- Immunohistochemistry (1:50-1:200)
- Western Blot (1:500-1:2000)

The optimal working dilution should be determined by the end user.

Storage Buffer	In PBS, 150 mM NaCl, pH 7.4 (50% glycerol, 0.02% sodium azide).
Storage Instruction	Store at -20°C for one year. After reconstitution, at 4°C for one month. It can also be aliquotted and stored frozen at -20°C for a longer time. Avoid repeated freezing and thawing.
Note	This product contains sodium azide: a POISONOUS AND HAZARDOUS SUBSTANCE which should be handled by trained staff only.

Applications

- Western Blot (Cell lysate)

Western Blot analysis of SH-SY5Y cell lysate with HES1 monoclonal antibody, clone FBB-8 (Cat # MAB20137).

- Immunohistochemistry
- Immunocytochemistry
- Immunofluorescence
- Flow Cytometry

Gene Info — HES1

Entrez GeneID	3280
Protein Accession#	Q14469
Gene Name	HES1
Gene Alias	FLJ20408, HES-1, HHL, HRY, bHLHb39
Gene Description	hairy and enhancer of split 1, (Drosophila)
Omim ID	139605
Gene Ontology	Hyperlink
Gene Summary	This protein belongs to the basic helix-loop-helix family of transcription factors. It is a transcriptional repressor of genes that require a bHLH protein for their transcription. The protein has a particular type of basic domain that contains a helix interrupting protein that binds to the N-box rather than the canonical E-box. [provided by RefSeq]
Other Designations	hairy and enhancer of split 1 hairy homolog transcription factor HES-1

Pathway

- [Maturity onset diabetes of the young](#)
- [Notch signaling pathway](#)

Disease

- [Attention Deficit Disorder with Hyperactivity](#)
- [Autistic Disorder](#)
- [Genetic Predisposition to Disease](#)
- [NARP](#)