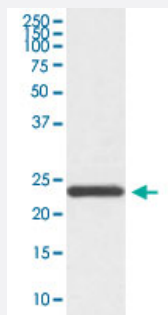


WFDC2 monoclonal antibody, clone AOAI-23

Catalog # MAB20132 Size 100 uL

Applications



Western Blot (Cell lysate)

Western Blot analysis of SW480 cell lysate with WFDC2 monoclonal antibody, clone AOAI-23 (Cat # MAB20132).

Specification

Product Description Rabbit monoclonal antibody raised against synthetic peptide of human WFDC2.

Immunogen A synthetic peptide corresponding to human WFDC2.

Host Rabbit

Theoretical MW (kDa) 12.993

Reactivity Human

Form Liquid

Purification Affinity purification

Isotype IgG

Recommend Usage

- Flow Cytometry (1:50)
- Immunocytochemistry (1:50-1:200)
- Immunofluorescence (1:50-1:200)
- Immunoprecipitation (1:50)
- Western Blot (1:500-1:2000)

The optimal working dilution should be determined by the end user.

Storage Buffer	In PBS, 150 mM NaCl, pH 7.4 (50% glycerol, 0.02% sodium azide).
Storage Instruction	Store at -20°C for one year. After reconstitution, at 4°C for one month. It can also be aliquotted and stored frozen at -20°C for a longer time. Avoid repeated freezing and thawing.
Note	This product contains sodium azide: a POISONOUS AND HAZARDOUS SUBSTANCE which should be handled by trained staff only.

Applications

- Western Blot (Cell lysate)

Western Blot analysis of SW480 cell lysate with WFDC2 monoclonal antibody, clone AOAI-23 (Cat # MAB20132).

- Immunocytochemistry
- Immunofluorescence
- Immunoprecipitation
- Flow Cytometry

Gene Info — WFDC2

Entrez GeneID	10406
Protein Accession#	Q14508
Gene Name	WFDC2
Gene Alias	HE4, MGC57529, WAP5, dJ461P17.6
Gene Description	WAP four-disulfide core domain 2
Gene Ontology	Hyperlink
Gene Summary	This gene encodes a protein that is a member of the WFDC domain family. The WFDC domain, or WAP Signature motif, contains eight cysteines forming four disulfide bonds at the core of the protein, and functions as a protease inhibitor in many family members. This gene is expressed in pulmonary epithelial cells, and was also found to be expressed in some ovarian cancers. The encoded protein is a small secretory protein, which may be involved in sperm maturation. [provided by RefSeq]

Other Designations

OTTHUMP00000031141|WAP domain containing protein HE4-V4|epididymal secretory protein E4|epididymis-specific, whey-acidic protein type, four-disulfide core|major epididymis-specific protein E4
