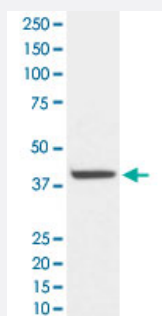


# HDAC8 monoclonal antibody, clone HGO-8

Catalog # MAB20129      Size 100 uL

## Applications



### Western Blot (Cell lysate)

Western Blot analysis of HeLa cell lysate with HDAC8 monoclonal antibody, clone HGO-8 (Cat # MAB20129).

## Specification

**Product Description** Rabbit monoclonal antibody raised against synthetic peptide of human HDAC8.

**Immunogen** A synthetic peptide corresponding to human HDAC8.

**Host** Rabbit

**Theoretical MW (kDa)** 41.758

**Reactivity** Human

**Form** Liquid

**Purification** Affinity purification

**Isotype** IgG

**Recommend Usage**  
Flow Cytometry (1:50)  
Immunoprecipitation (1:50)  
Western Blot (1:5000-1:20000)  
The optimal working dilution should be determined by the end user.

**Storage Buffer** In PBS, 150 mM NaCl, pH 7.4 (50% glycerol, 0.02% sodium azide).

**Storage Instruction**

Store at -20°C for one year. After reconstitution, at 4°C for one month. It can also be aliquotted and stored frozen at -20°C for a longer time. Avoid repeated freezing and thawing.

**Note**

This product contains sodium azide: a POISONOUS AND HAZARDOUS SUBSTANCE which should be handled by trained staff only.

## Applications

- Western Blot (Cell lysate)

Western Blot analysis of HeLa cell lysate with HDAC8 monoclonal antibody, clone HGO-8 (Cat # MAB20129).

- Immunoprecipitation

- Flow Cytometry

## Gene Info — HDAC8

**Entrez GeneID**[55869](#)**Protein Accession#**[Q9BY41](#)**Gene Name**

HDAC8

**Gene Alias**

HDACL1, RPD3

**Gene Description**

histone deacetylase 8

**Omim ID**[300269](#)**Gene Ontology**[Hyperlink](#)**Gene Summary**

Histones play a critical role in transcriptional regulation, cell cycle progression, and developmental events. Histone acetylation/deacetylation alters chromosome structure and affects transcription factor access to DNA. The protein encoded by this gene belongs to class I of the histone deacetylase/acuc/apha family. It has histone deacetylase activity and represses transcription when tethered to a promoter. [provided by RefSeq]

**Other Designations**

histone deacetylase-like 1

## Disease

- [Cardiovascular Diseases](#)

- [Diabetes Mellitus](#)
- [Edema](#)