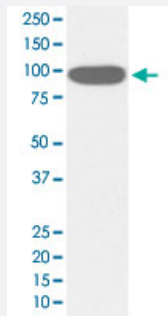


HSP90B1 monoclonal antibody, clone AAHG-8

Catalog # MAB20111 Size 100 uL

Applications



Western Blot (Cell lysate)

Western Blot analysis of HeLa cell lysate with HSP90B1 monoclonal antibody, clone AAHG-8 (Cat # MAB20111).

Specification

Product Description Rabbit monoclonal antibody raised against synthetic peptide of human HSP90B1.

Immunogen A synthetic peptide corresponding to human HSP90B1.

Host Rabbit

Theoretical MW (kDa) 92.469

Reactivity Human

Form Liquid

Purification Affinity purification

Isotype IgG

Recommend Usage

- Immunocytochemistry (1:50-1:200)
- Immunofluorescence (1:50-1:200)
- Immunohistochemistry (1:50-1:200)
- Western Blot (1:500-1:2000)
- The optimal working dilution should be determined by the end user.

Storage Buffer In PBS, 150 mM NaCl, pH 7.4 (50% glycerol, 0.02% sodium azide).

Storage Instruction

Store at -20°C for one year. After reconstitution, at 4°C for one month. It can also be aliquotted and stored frozen at -20°C for a longer time. Avoid repeated freezing and thawing.

Note

This product contains sodium azide: a POISONOUS AND HAZARDOUS SUBSTANCE which should be handled by trained staff only.

Applications

- Western Blot (Cell lysate)

Western Blot analysis of HeLa cell lysate with HSP90B1 monoclonal antibody, clone AAHG-8 (Cat # MAB20111).

- Immunohistochemistry

- Immunocytochemistry

- Immunofluorescence

Gene Info — HSP90B1

Entrez GeneID[7184](#)**Protein Accession#**[P14625](#)**Gene Name**

HSP90B1

Gene Alias

ECGP, GP96, GRP94, TRA1

Gene Description

heat shock protein 90kDa beta (Grp94), member 1

Omim ID[191175](#)**Gene Ontology**[Hyperlink](#)**Gene Summary**

HSP90 proteins are highly conserved molecular chaperones that have key roles in signal transduction, protein folding, protein degradation, and morphologic evolution. HSP90 proteins normally associate with other cochaperones and play important roles in folding newly synthesized proteins or stabilizing and refolding denatured proteins after stress. HSP90B1 is an endoplasmic reticulum HSP90 protein. Other HSP90 proteins are found in cytosol (see HSP90AA1; MIM 140571) and mitochondria (TRAP1; MIM 606219) (Chen et al., 2005 [PubMed 16269234]).[supplied by OMIM]

Other Designations

Tumor rejection antigen-1 (gp96)|endothelial cell (HBMEC) glycoprotein|glucose regulated protein, 94 kDa|heat shock protein 90kDa beta, member 1|tumor rejection antigen (gp96) 1

Pathway

- [Pathways in cancer](#)
- [Prostate cancer](#)

Disease

- [Bipolar Disorder](#)
- [Cardiovascular Diseases](#)
- [Diabetes Mellitus](#)
- [Edema](#)
- [Kidney Failure](#)
- [Schizophrenia](#)