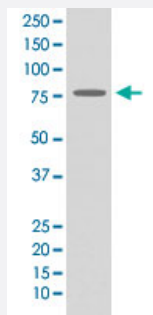


ADRBK1 monoclonal antibody, clone EGE-1

Catalog # MAB20106 Size 100 uL

Applications



Western Blot (Cell lysate)

Western Blot analysis of THP-1 cell lysate with ADRBK1 monoclonal antibody, clone EGE-1 (Cat # MAB20106).

Specification

Product Description Rabbit monoclonal antibody raised against synthetic peptide of human ADRBK1.

Immunogen A synthetic peptide corresponding to human ADRBK1.

Host Rabbit

Theoretical MW (kDa) 79.574

Reactivity Human

Form Liquid

Purification Affinity purification

Isotype IgG

Recommend Usage
Immunohistochemistry (1:50-1:200)
Western Blot (1:500-1:2000)
The optimal working dilution should be determined by the end user.

Storage Buffer In PBS, 150 mM NaCl, pH 7.4 (50% glycerol, 0.02% sodium azide).

Storage Instruction

Store at -20°C for one year. After reconstitution, at 4°C for one month. It can also be aliquotted and stored frozen at -20°C for a longer time. Avoid repeated freezing and thawing.

Note

This product contains sodium azide: a POISONOUS AND HAZARDOUS SUBSTANCE which should be handled by trained staff only.

Applications

- Western Blot (Cell lysate)

Western Blot analysis of THP-1 cell lysate with ADRBK1 monoclonal antibody, clone EGE-1 (Cat # MAB20106).

- Immunohistochemistry

Gene Info — ADRBK1

Entrez GeneID [156](#)

Protein Accession# [P25098](#)

Gene Name ADRBK1

Gene Alias BARK1, BETA-ARK1, FLJ16718, GRK2

Gene Description adrenergic, beta, receptor kinase 1

Omim ID [109635](#)

Gene Ontology [Hyperlink](#)

Gene Summary The product of this gene phosphorylates the beta-2-adrenergic receptor and appears to mediate agonist-specific desensitization observed at high agonist concentrations. This protein is an ubiquitous cytosolic enzyme that specifically phosphorylates the activated form of the beta-adrenergic and related G-protein-coupled receptors. Abnormal coupling of beta-adrenergic receptor to G protein is involved in the pathogenesis of the failing heart. [provided by RefSeq]

Other Designations beta adrenergic receptor kinase 1

Pathway

- [Chemokine signaling pathway](#)
- [Endocytosis](#)

Disease

- [Anorexia Nervosa](#)
- [Bulimia](#)
- [Cardiovascular Diseases](#)
- [Diabetes Mellitus](#)
- [Edema](#)
- [Genetic Predisposition to Disease](#)