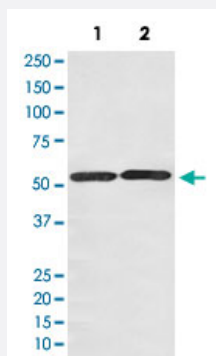


SLC2A3 monoclonal antibody, clone ABHB-19

Catalog # MAB20097 Size 100 uL

Applications



Western Blot (Cell lysate)

Western Blot analysis of Lane 1: HepG2 and Lane 2: NIH/3T3 cell lysates with SLC2A3 monoclonal antibody, clone ABHB-19 (Cat # MAB20097).

Specification

Product Description	Rabbit monoclonal antibody raised against synthetic peptide of human SLC2A3.
Immunogen	A synthetic peptide corresponding to human SLC2A3.
Host	Rabbit
Theoretical MW (kDa)	53.924
Reactivity	Human
Form	Liquid
Purification	Affinity purification
Isotype	IgG
Recommend Usage	Western Blot (1:500-1:2000) The optimal working dilution should be determined by the end user.
Storage Buffer	In PBS, 150 mM NaCl, pH 7.4 (50% glycerol, 0.02% sodium azide).

Storage Instruction

Store at -20°C for one year. After reconstitution, at 4°C for one month. It can also be aliquotted and stored frozen at -20°C for a longer time. Avoid repeated freezing and thawing.

Note

This product contains sodium azide: a POISONOUS AND HAZARDOUS SUBSTANCE which should be handled by trained staff only.

Applications

- Western Blot (Cell lysate)

Western Blot analysis of Lane 1: HepG2 and Lane 2: NIH/3T3 cell lysates with SLC2A3 monoclonal antibody, clone ABHB-19 (Cat # MAB20097).

Gene Info — SLC2A3

Entrez GeneID [6515](#)

Protein Accession# [P11169](#)

Gene Name SLC2A3

Gene Alias FLJ90380, GLUT3

Gene Description solute carrier family 2 (facilitated glucose transporter), member 3

Omim ID [138170](#)

Gene Ontology [Hyperlink](#)

Gene Summary O

Other Designations GLUCOSE TRANSPORTER TYPE 3, BRAIN

Disease

- [Anorexia Nervosa](#)
- [Bulimia](#)
- [Genetic Predisposition to Disease](#)
- [Hyperparathyroidism](#)