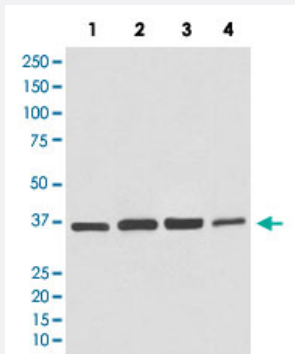


GAPDH monoclonal antibody, clone BG-7

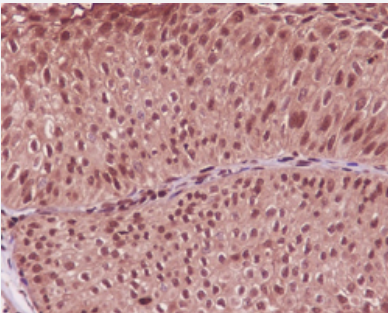
Catalog # MAB20071 Size 100 uL

Applications



Western Blot (Cell lysate)

Western Blot analysis of Lane 1: HeLa, Lane 2: MDBK, Lane 3: COS-1 and Lane 4: MDCK cell lysates with GAPDH monoclonal antibody, clone BG-7 (Cat # MAB20071).



Immunohistochemistry (Formalin/PFA-fixed paraffin-embedded sections)

Immunohistochemical staining (Formalin-fixed paraffin-embedded sections) of human bladder cancer with GAPDH monoclonal antibody, clone BG-7 (Cat # MAB20071).

Specification

| | |
|-----------------------------|---|
| Product Description | Rabbit monoclonal antibody raised against synthetic peptide of human GAPDH. |
| Immunogen | A synthetic peptide corresponding to human GAPDH. |
| Host | Rabbit |
| Theoretical MW (kDa) | 36.053 |
| Reactivity | Human |
| Form | Liquid |

| | |
|---------------------|--|
| Purification | Affinity purification |
| Isotype | IgG |
| Recommend Usage | Flow Cytometry Immunocytochemistry (1:100-1:250) Immunofluorescence (1:100-1:250) Immunohistochemistry (Formalin/PFA-fixed paraffin-embedded sections) (1:100-1:250) Western Blot (1:3000-1:10000) The optimal working dilution should be determined by the end user. |
| Storage Buffer | In PBS, 150 mM NaCl, pH 7.4 (50% glycerol, 0.02% sodium azide). |
| Storage Instruction | Store at -20°C for one year. After reconstitution, at 4°C for one month. It can also be aliquotted and stored frozen at -20°C for a longer time. Avoid repeated freezing and thawing. |
| Note | This product contains sodium azide: a POISONOUS AND HAZARDOUS SUBSTANCE which should be handled by trained staff only. |

Applications

- Western Blot (Cell lysate)

Western Blot analysis of Lane 1: HeLa, Lane 2: MDBK, Lane 3: COS-1 and Lane 2: MDCK cell lysates with GAPDH monoclonal antibody, clone BG-7 (Cat # MAB20071).

- Immunohistochemistry (Formalin/PFA-fixed paraffin-embedded sections)

Immunohistochemical staining (Formalin-fixed paraffin-embedded sections) of human bladder cancer with GAPDH monoclonal antibody, clone BG-7 (Cat # MAB20071).

- Immunocytochemistry

- Immunofluorescence

- Flow Cytometry

Gene Info — GAPDH

| | |
|--------------------|------------------------|
| Entrez GeneID | 2597 |
| Protein Accession# | P04406 |
| Gene Name | GAPDH |
| Gene Alias | G3PD, GAPD, MGC88685 |

| | |
|--------------------|---|
| Gene Description | glyceraldehyde-3-phosphate dehydrogenase |
| Omim ID | 138400 |
| Gene Ontology | Hyperlink |
| Gene Summary | The product of this gene catalyzes an important energy-yielding step in carbohydrate metabolism, the reversible oxidative phosphorylation of glyceraldehyde-3-phosphate in the presence of inorganic phosphate and nicotinamide adenine dinucleotide (NAD). The enzyme exists as a tetramer of identical chains. Many pseudogenes similar to this locus are present in the human genome. [provided by RefSeq] |
| Other Designations | OTTHUMP00000174431 OTTHUMP00000174432 aging-associated gene 9 protein glyceraldehyde 3-phosphate dehydrogenase |

Pathway

- [Biosynthesis of alkaloids derived from histidine and purine](#)
- [Biosynthesis of alkaloids derived from ornithine](#)
- [Biosynthesis of alkaloids derived from shikimate pathway](#)
- [Biosynthesis of alkaloids derived from terpenoid and polyketide](#)
- [Biosynthesis of phenylpropanoids](#)
- [Biosynthesis of plant hormones](#)
- [Biosynthesis of terpenoids and steroids](#)
- [Glycolysis / Gluconeogenesis](#)
- [Metabolic pathways](#)

Disease

- [Alzheimer disease](#)
- [Cardiovascular Diseases](#)
- [Diabetes Complications](#)
- [Metabolic Syndrome X](#)
- [Neoplasms](#)

- [Nerve Degeneration](#)
- [Osteoporosis](#)