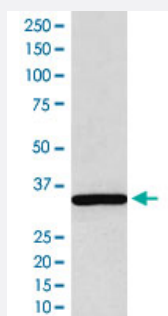


# SGCG monoclonal antibody, clone AbS34

Catalog # MAB20069      Size 100 uL

## Applications



### Western Blot (Cell lysate)

Western Blot analysis of human skeletal muscle tissue lysate with SGCG monoclonal antibody, clone AbS34 (Cat # MAB20069).

## Specification

**Product Description** Rabbit monoclonal antibody raised against synthetic peptide of human SGCG.

**Immunogen** A synthetic peptide corresponding to human SGCG.

**Host** Rabbit

**Theoretical MW (kDa)** 32.379

**Reactivity** Human

**Form** Liquid

**Purification** Affinity purification

**Isotype** IgG

**Recommend Usage**  
Immunohistochemistry (1:50-1:200)  
Immunoprecipitation (1:50)  
Western Blot (1:500-1:2000)  
The optimal working dilution should be determined by the end user.

**Storage Buffer** In PBS, 150 mM NaCl, pH 7.4 (50% glycerol, 0.02% sodium azide).

**Storage Instruction**

Store at -20°C for one year. After reconstitution, at 4°C for one month. It can also be aliquotted and stored frozen at -20°C for a longer time. Avoid repeated freezing and thawing.

**Note**

This product contains sodium azide: a POISONOUS AND HAZARDOUS SUBSTANCE which should be handled by trained staff only.

## Applications

- Western Blot (Cell lysate)

Western Blot analysis of human skeletal muscle tissue lysate with SGCG monoclonal antibody, clone AbS34 (Cat # MAB20069).

- Immunohistochemistry

- Immunoprecipitation

## Gene Info — SGCG

**Entrez GeneID** [6445](#)

**Protein Accession#** [Q13326](#)

**Gene Name** SGCG

**Gene Alias** A4, DAGA4, DMDA, DMDA1, LGMD2C, MAM, MGC130048, SCARMD2, SCG3, TYPE

**Gene Description** sarcoglycan, gamma (35kDa dystrophin-associated glycoprotein)

**Omim ID** [253700](#) [608896](#)

**Gene Ontology** [Hyperlink](#)

**Gene Summary**

This gene encodes gamma-sarcoglycan, one of several sarcolemmal transmembrane glycoproteins that interact with dystrophin. The dystrophin-glycoprotein complex (DGC) spans the sarcolemma and is comprised of dystrophin, syntrophin, alpha- and beta-dystroglycans and sarcoglycans. The DGC provides a structural link between the subsarcolemmal cytoskeleton and the extracellular matrix of muscle cells. Defects in the encoded protein can lead to early onset autosomal recessive muscular dystrophy, in particular limb-girdle muscular dystrophy, type 2C (LGMD2C). [provided by RefSeq]

**Other Designations**

35kD dystrophin-associated glycoprotein|OTTHUMP00000018112|gamma sarcoglycan|sarcoglycan, gamma (35kD dystrophin-associated glycoprotein)

## Pathway

- [Arrhythmogenic right ventricular cardiomyopathy \(ARVC\)](#)
- [Hypertrophic cardiomyopathy \(HCM\)](#)

## Disease

- [Muscular Dystrophies](#)
- [Tobacco Use Disorder](#)