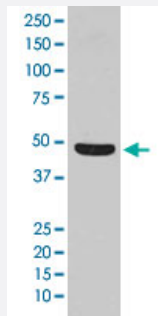


# FLOT1 monoclonal antibody, clone BHG-6

Catalog # MAB20050      Size 100 uL

## Applications



### Western Blot (Cell lysate)

Western Blot analysis of HeLa cell lysate with FLOT1 monoclonal antibody, clone BHG-6 (Cat # MAB20050).

## Specification

<b>Product Description</b>	Rabbit monoclonal antibody raised against synthetic peptide of human FLOT1.
<b>Immunogen</b>	A synthetic peptide corresponding to human FLOT1.
<b>Host</b>	Rabbit
<b>Theoretical MW (kDa)</b>	47.355
<b>Reactivity</b>	Human
<b>Form</b>	Liquid
<b>Purification</b>	Affinity purification
<b>Isotype</b>	IgG
<b>Recommend Usage</b>	Western Blot (1:500-1:2000) The optimal working dilution should be determined by the end user.
<b>Storage Buffer</b>	In PBS, 150 mM NaCl, pH 7.4 (50% glycerol, 0.02% sodium azide).
<b>Storage Instruction</b>	Store at -20°C for one year. After reconstitution, at 4°C for one month. It can also be aliquotted and stored frozen at -20°C for a longer time. Avoid repeated freezing and thawing.

**Note**

This product contains sodium azide: a POISONOUS AND HAZARDOUS SUBSTANCE which should be handled by trained staff only.

## Applications

- Western Blot (Cell lysate)

Western Blot analysis of HeLa cell lysate with FLOT1 monoclonal antibody, clone BHG-6 (Cat # MAB20050).

## Gene Info — FLOT1

Entrez GeneID [10211](#)

Protein Accession# [O75955](#)

Gene Name FLOT1

Gene Alias -

Gene Description flotillin 1

Omim ID [606998](#)

Gene Ontology [Hyperlink](#)

**Gene Summary** Caveolae are small domains on the inner cell membrane involved in vesicular trafficking and signal transduction. FLOT1 encodes a caveolae-associated, integral membrane protein. The function of flotillin 1 has not been determined. [provided by RefSeq]

**Other Designations** OTTHUMP00000029208|integral membrane component of caveolae

## Pathway

- [Insulin signaling pathway](#)

## Disease

- [Genetic Predisposition to Disease](#)
- [Lupus Erythematosus](#)