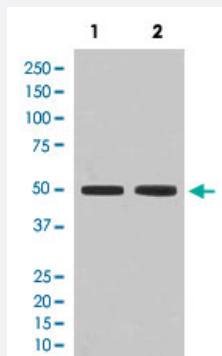


# FLOT1 monoclonal antibody, clone BHB-8

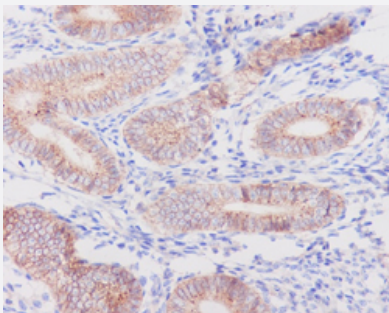
Catalog # MAB20049      Size 100 uL

## Applications



### Western Blot (Cell lysate)

Western Blot analysis of Lane 1: HeLa and Lane 2: K562 cell lysates with FLOT1 monoclonal antibody, clone BHB-8 (Cat # MAB20049).



### Immunohistochemistry (Formalin/PFA-fixed paraffin-embedded sections)

Immunohistochemical staining (Formalin-fixed paraffin-embedded sections) of human uterus with FLOT1 monoclonal antibody, clone BHB-8 (Cat # MAB20049).

## Specification

<b>Product Description</b>	Rabbit monoclonal antibody raised against synthetic peptide of human FLOT1.
<b>Immunogen</b>	A synthetic peptide corresponding to human FLOT1.
<b>Host</b>	Rabbit
<b>Theoretical MW (kDa)</b>	47.355
<b>Reactivity</b>	Human
<b>Form</b>	Liquid

<b>Purification</b>	Affinity purification
<b>Isotype</b>	IgG
<b>Recommend Usage</b>	Immunohistochemistry (Formalin/PFA-fixed paraffin-embedded sections) (1:50-1:200) Immunoprecipitation (1:50) Western Blot (1:500-1:2000) The optimal working dilution should be determined by the end user.
<b>Storage Buffer</b>	In PBS, 150 mM NaCl, pH 7.4 (50% glycerol, 0.02% sodium azide).
<b>Storage Instruction</b>	Store at -20°C for one year. After reconstitution, at 4°C for one month. It can also be aliquotted and stored frozen at -20°C for a longer time. Avoid repeated freezing and thawing.
<b>Note</b>	This product contains sodium azide: a POISONOUS AND HAZARDOUS SUBSTANCE which should be handled by trained staff only.

## Applications

- Western Blot (Cell lysate)

Western Blot analysis of Lane 1: HeLa and Lane 2: K562 cell lysates with FLOT1 monoclonal antibody, clone BHB-8 (Cat # MAB20049).

- Immunohistochemistry (Formalin/PFA-fixed paraffin-embedded sections)

Immunohistochemical staining (Formalin-fixed paraffin-embedded sections) of human uterus with FLOT1 monoclonal antibody, clone BHB-8 (Cat # MAB20049).

- Immunoprecipitation

## Gene Info — FLOT1

<b>Entrez GeneID</b>	<a href="#">10211</a>
<b>Protein Accession#</b>	<a href="#">O75955</a>
<b>Gene Name</b>	FLOT1
<b>Gene Alias</b>	-
<b>Gene Description</b>	flotillin 1
<b>Omim ID</b>	<a href="#">606998</a>
<b>Gene Ontology</b>	<a href="#">Hyperlink</a>

**Gene Summary**

Caveolae are small domains on the inner cell membrane involved in vesicular trafficking and signal transduction. FLOT1 encodes a caveolae-associated, integral membrane protein. The function of flotillin 1 has not been determined. [provided by RefSeq]

**Other Designations**

OTTHUMP00000029208|integral membrane component of caveolae

**Pathway**

- [Insulin signaling pathway](#)

**Disease**

- [Genetic Predisposition to Disease](#)
- [Lupus Erythematosus](#)