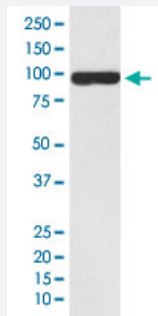


FAP monoclonal antibody, clone AbF22

Catalog # MAB20032 Size 100 uL

Applications



Western Blot (Cell lysate)

Western Blot analysis of U-87 MG cell lysate with FAP monoclonal antibody, clone AbF22 (Cat # MAB20032).

Specification

Product Description Rabbit monoclonal antibody raised against synthetic peptide of human FAP.

Immunogen A synthetic peptide corresponding to human FAP.

Host Rabbit

Theoretical MW (kDa) 87.713

Reactivity Human

Form Liquid

Purification Affinity purification

Isotype IgG

Recommend Usage
Immunohistochemistry (1:50-1:200)
Western Blot (1:500-1:2000)
The optimal working dilution should be determined by the end user.

Storage Buffer In PBS, 150 mM NaCl, pH 7.4 (50% glycerol, 0.02% sodium azide).

Storage Instruction

Store at -20°C for one year. After reconstitution, at 4°C for one month. It can also be aliquotted and stored frozen at -20°C for a longer time. Avoid repeated freezing and thawing.

Note

This product contains sodium azide: a POISONOUS AND HAZARDOUS SUBSTANCE which should be handled by trained staff only.

Applications

- Western Blot (Cell lysate)

Western Blot analysis of U-87 MG cell lysate with FAP monoclonal antibody, clone AbF22 (Cat # MAB20032).

- Immunohistochemistry

Gene Info — FAP

Entrez GeneID [2191](#)

Protein Accession# [Q12884](#)

Gene Name FAP

Gene Alias DKFZp686G13158, DPPIV, FAPA

Gene Description fibroblast activation protein, alpha

Omim ID [600403](#)

Gene Ontology [Hyperlink](#)

Gene Summary The protein encoded by this gene is a homodimeric integral membrane gelatinase belonging to the serine protease family. It is selectively expressed in reactive stromal fibroblasts of epithelial cancers, granulation tissue of healing wounds, and malignant cells of bone and soft tissue sarcomas. This protein is thought to be involved in the control of fibroblast growth or epithelial-mesenchymal interactions during development, tissue repair, and epithelial carcinogenesis. [provided by RefSeq]

Other Designations fibroblast activation protein, alpha subunit|integral membrane serine protease|seprase

Disease

- [Tobacco Use Disorder](#)