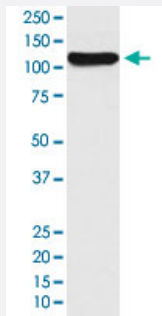


PTK2 monoclonal antibody, clone DDD-16

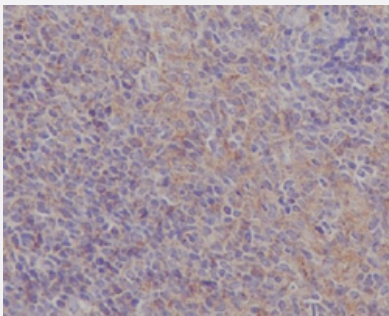
Catalog # MAB20030 Size 100 uL

Applications



Western Blot (Cell lysate)

Western Blot analysis of HeLa cell lysate with PTK2 monoclonal antibody, clone DDD-16 (Cat # MAB20030).



Immunohistochemistry (Formalin/PFA-fixed paraffin-embedded sections)

Immunohistochemical staining (Formalin-fixed paraffin-embedded sections) of mouse spleen with PTK2 monoclonal antibody, clone DDD-16 (Cat # MAB20030).

Specification

Product Description	Rabbit monoclonal antibody raised against synthetic peptide of human PTK2.
Immunogen	A synthetic peptide corresponding to human PTK2.
Host	Rabbit
Theoretical MW (kDa)	119.233
Reactivity	Human
Form	Liquid
Purification	Affinity purification

Isotype	IgG
Recommend Usage	Flow Cytometry (1:50) Immunocytochemistry (1:50-1:200) Immunofluorescence (1:50-1:200) Immunohistochemistry (Formalin/PFA-fixed paraffin-embedded sections) (1:50-1:200) Immunoprecipitation (1:30) Western Blot (1:500-1:2000) The optimal working dilution should be determined by the end user.
Storage Buffer	In PBS, 150 mM NaCl, pH 7.4 (50% glycerol, 0.02% sodium azide).
Storage Instruction	Store at -20°C for one year. After reconstitution, at 4°C for one month. It can also be aliquotted and stored frozen at -20°C for a longer time. Avoid repeated freezing and thawing.
Note	This product contains sodium azide: a POISONOUS AND HAZARDOUS SUBSTANCE which should be handled by trained staff only.

Applications

- Western Blot (Cell lysate)

Western Blot analysis of HeLa cell lysate with PTK2 monoclonal antibody, clone DDD-16 (Cat # MAB20030).

- Immunohistochemistry (Formalin/PFA-fixed paraffin-embedded sections)

Immunohistochemical staining (Formalin-fixed paraffin-embedded sections) of mouse spleen with PTK2 monoclonal antibody, clone DDD-16 (Cat # MAB20030).

- Immunocytochemistry

- Immunofluorescence

- Immunoprecipitation

- Flow Cytometry

Gene Info — PTK2

Entrez GeneID [5747](#)

Protein Accession# [Q05397](#)

Gene Name PTK2

Gene Alias	FADK, FAK, FAK1, pp125FAK
Gene Description	PTK2 protein tyrosine kinase 2
Omim ID	600758
Gene Ontology	Hyperlink
Gene Summary	<p>This gene encodes a cytoplasmic protein tyrosine kinase which is found concentrated in the focal adhesions that form between cells growing in the presence of extracellular matrix constituents. The encoded protein is a member of the FAK subfamily of protein tyrosine kinases but lacks significant sequence similarity to kinases from other subfamilies. Activation of this gene may be an important early step in cell growth and intracellular signal transduction pathways triggered in response to certain neural peptides or to cell interactions with the extracellular matrix. At least four transcript variants encoding four different isoforms have been found for this gene, but the full-length nature of only two of them have been determined. [provided by RefSeq]</p>
Other Designations	focal adhesion kinase 1

Pathway

- [Axon guidance](#)
- [Chemokine signaling pathway](#)
- [ErbB signaling pathway](#)
- [Focal adhesion](#)
- [Leukocyte transendothelial migration](#)
- [Pathways in cancer](#)
- [Regulation of actin cytoskeleton](#)
- [Small cell lung cancer](#)
- [VEGF signaling pathway](#)

Disease

- [Autistic Disorder](#)
- [Genetic Predisposition to Disease](#)
- [HIV Infections](#)

- [Leukemia](#)
- [Mental Retardation](#)
- [Neovascularization](#)
- [Psychotic Disorders](#)
- [Schizophrenia](#)