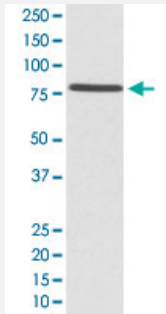


EZR monoclonal antibody, clone AAAI-5

Catalog # MAB20027 Size 100 uL

Applications



Western Blot (Cell lysate)

Western Blot analysis of HeLa cell lysate with EZR monoclonal antibody, clone AAAI-5 (Cat # MAB20027).

Specification

Product Description Rabbit monoclonal antibody raised against synthetic peptide of human EZR.

Immunogen A synthetic peptide corresponding to human EZR.

Host Rabbit

Theoretical MW (kDa) 69.413

Reactivity Human

Form Liquid

Purification Affinity purification

Isotype IgG

Recommend Usage
Immunohistochemistry (1:50-1:200)
Western Blot (1:500-1:2000)
The optimal working dilution should be determined by the end user.

Storage Buffer In PBS, 150 mM NaCl, pH 7.4 (50% glycerol, 0.02% sodium azide).

Storage Instruction

Store at -20°C for one year. After reconstitution, at 4°C for one month. It can also be aliquotted and stored frozen at -20°C for a longer time. Avoid repeated freezing and thawing.

Note

This product contains sodium azide: a POISONOUS AND HAZARDOUS SUBSTANCE which should be handled by trained staff only.

Applications

- Western Blot (Cell lysate)

Western Blot analysis of HeLa cell lysate with EZR monoclonal antibody, clone AAAI-5 (Cat # MAB20027).

- Immunohistochemistry

Gene Info — EZR

Entrez GeneID [7430](#)

Protein Accession# [P15311](#)

Gene Name EZR

Gene Alias CVIL, CVL, DKFZp762H157, FLJ26216, MGC1584, VIL2

Gene Description ezrin

Omim ID [123900](#)

Gene Ontology [Hyperlink](#)

Gene Summary The cytoplasmic peripheral membrane protein encoded by this gene functions as a protein-tyrosine kinase substrate in microvilli. As a member of the ERM protein family, this protein serves as an intermediate between the plasma membrane and the actin cytoskeleton. This protein plays a key role in cell surface structure adhesion, migration and organization, and it has been implicated in various human cancers. A pseudogene located on chromosome 3 has been identified for this gene. Alternatively spliced variants have also been described for this gene. [provided by RefSeq]

Other Designations OTTHUMP00000017506|OTTHUMP00000017507|cytovillin 2|villin 2 (ezrin)

Pathway

- [Leukocyte transendothelial migration](#)
- [Pathogenic Escherichia coli infection - EHEC](#)

- [Regulation of actin cytoskeleton](#)

Disease

- [Asthma](#)
- [Cardiovascular Diseases](#)
- [Diabetes Mellitus](#)
- [Edema](#)
- [Genetic Predisposition to Disease](#)
- [Hypersensitivity](#)
- [Lung Neoplasms](#)
- [Ovarian Neoplasms](#)
- [Pulmonary Disease](#)
- [Tobacco Use Disorder](#)
- [Urinary Bladder Neoplasms](#)
- [Werner syndrome](#)