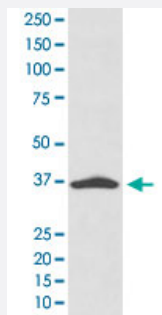


# EPCAM monoclonal antibody, clone GBG-5

Catalog # MAB20013      Size 100 uL

## Applications



### Western Blot (Cell lysate)

Western Blot analysis of A431 cell lysate with EPCAM monoclonal antibody, clone GBG-5 (Cat # MAB20013).

## Specification

**Product Description** Rabbit monoclonal antibody raised against synthetic peptide of human EPCAM.

**Immunogen** A synthetic peptide corresponding to human EPCAM.

**Host** Rabbit

**Theoretical MW (kDa)** 34.932

**Reactivity** Human

**Form** Liquid

**Purification** Affinity purification

**Isotype** IgG

**Recommend Usage**  
Immunohistochemistry (1:50-1:200)  
Western Blot (1:1000-1:2000)  
The optimal working dilution should be determined by the end user.

**Storage Buffer** In PBS, 150 mM NaCl, pH 7.4 (50% glycerol, 0.02% sodium azide).

**Storage Instruction**

Store at -20°C for one year. After reconstitution, at 4°C for one month. It can also be aliquotted and stored frozen at -20°C for a longer time. Avoid repeated freezing and thawing.

**Note**

This product contains sodium azide: a POISONOUS AND HAZARDOUS SUBSTANCE which should be handled by trained staff only.

## Applications

- Western Blot (Cell lysate)

Western Blot analysis of A431 cell lysate with EPCAM monoclonal antibody, clone GBG-5 (Cat # MAB20013).

- Immunohistochemistry

## Gene Info — EPCAM

**Entrez GeneID** [4072](#)

**Protein Accession#** [P16422](#)

**Gene Name** EPCAM

**Gene Alias** 17-1A, 323/A3, CD326, CO-17A, CO17-1A, EGP, EGP-2, EGP34, EGP40, ESA, Ep-CAM, GA733-2, HEA125, KS1/4, KSA, M4S1, MH99, MIC18, MK-1, MOC31, TACST-1, TACSTD1, TROP1, hEGP-2

**Gene Description** epithelial cell adhesion molecule

**Omim ID** [185535](#)

**Gene Ontology** [Hyperlink](#)

**Gene Summary** This gene encodes a carcinoma-associated antigen and is a member of a family that includes at least two type I membrane proteins. This antigen is expressed on most normal epithelial cells and gastrointestinal carcinomas and functions as a homotypic calcium-independent cell adhesion molecule. The antigen is being used as a target for immunotherapy treatment of human carcinomas. Mutations in this gene result in congenital tufting enteropathy. [provided by RefSeq]

**Other Designations** adenocarcinoma-associated antigen|carcinoma-associated antigen GA733-2|human epithelial glycoprotein-2|membrane component, chromosome 4, surface marker (35kD glycoprotein)|tumor-associated calcium signal transducer 1

## Disease

- [Genetic Predisposition to Disease](#)
- [Ovarian Neoplasms](#)