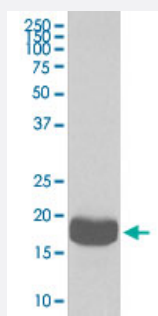


EIF4EBP1 monoclonal antibody, clone IGG-5

Catalog # MAB20007 Size 100 uL

Applications



Western Blot (Cell lysate)

Western Blot analysis of K562 cell lysate with EIF4EBP1 monoclonal antibody, clone IGG-5 (Cat # MAB20007).

Specification

Product Description Rabbit monoclonal antibody raised against synthetic peptide of human EIF4EBP1.

Immunogen A synthetic peptide corresponding to human EIF4EBP1.

Host Rabbit

Theoretical MW (kDa) 12.58

Reactivity Human

Form Liquid

Purification Affinity purification

Isotype IgG

Recommend Usage

- Flow Cytometry (1:50)
- Immunocytochemistry (1:50-1:200)
- Immunofluorescence (1:50-1:200)
- Immunohistochemistry (1:50-1:200)
- Immunoprecipitation (1:50)
- Western Blot (1:1000-1:2000)

The optimal working dilution should be determined by the end user.

Storage Buffer	In PBS, 150 mM NaCl, pH 7.4 (50% glycerol, 0.02% sodium azide).
Storage Instruction	Store at -20°C for one year. After reconstitution, at 4°C for one month. It can also be aliquotted and stored frozen at -20°C for a longer time. Avoid repeated freezing and thawing.
Note	This product contains sodium azide: a POISONOUS AND HAZARDOUS SUBSTANCE which should be handled by trained staff only.

Applications

- Western Blot (Cell lysate)

Western Blot analysis of K562 cell lysate with EIF4EBP1 monoclonal antibody, clone IGG-5 (Cat # MAB20007).

- Immunohistochemistry

- Immunocytochemistry

- Immunofluorescence

- Immunoprecipitation

- Flow Cytometry

Gene Info — EIF4EBP1

Entrez GeneID	1978
---------------	----------------------

Protein Accession#	Q13541
--------------------	------------------------

Gene Name	EIF4EBP1
-----------	----------

Gene Alias	4E-BP1, 4EBP1, BP-1, MGC4316, PHAS-I
------------	--------------------------------------

Gene Description	eukaryotic translation initiation factor 4E binding protein 1
------------------	---

Omim ID	602223
---------	------------------------

Gene Ontology	Hyperlink
---------------	---------------------------

Gene Summary

This gene encodes one member of a family of translation repressor proteins. The protein directly interacts with eukaryotic translation initiation factor 4E (eIF4E), which is a limiting component of the multisubunit complex that recruits 40S ribosomal subunits to the 5' end of mRNAs. Interaction of this protein with eIF4E inhibits complex assembly and represses translation. This protein is phosphorylated in response to various signals including UV irradiation and insulin signaling, resulting in its dissociation from eIF4E and activation of mRNA translation. [provided by RefSeq]

Other Designations

eIF4E-binding protein 1|phosphorylated heat- and acid-stable protein regulated by insulin 1

Pathway

- [Acute myeloid leukemia](#)
- [ErbB signaling pathway](#)
- [Insulin signaling pathway](#)
- [mTOR signaling pathway](#)

Disease

- [Alzheimer disease](#)
- [Genetic Predisposition to Disease](#)
- [Multiple System Atrophy](#)
- [Obesity](#)