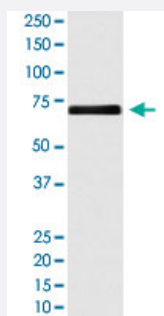


SLC1A2 monoclonal antibody, clone ABED-19

Catalog # MAB20001 Size 100 uL

Applications



Western Blot (Cell lysate)

Western Blot analysis of HeLa cell lysate with SLC1A2 monoclonal antibody, clone ABED-19 (Cat # MAB20001).

Specification

Product Description Rabbit monoclonal antibody raised against synthetic peptide of human SLC1A2.

Immunogen A synthetic peptide corresponding to human SLC1A2.

Host Rabbit

Theoretical MW (kDa) 62.104

Reactivity Human

Form Liquid

Purification Affinity purification

Isotype IgG

Recommend Usage
Immunoprecipitation (1:50)
Western Blot (1:500-1:2000)
The optimal working dilution should be determined by the end user.

Storage Buffer In PBS, 150 mM NaCl, pH 7.4 (50% glycerol, 0.02% sodium azide).

Storage Instruction

Store at -20°C for one year. After reconstitution, at 4°C for one month. It can also be aliquotted and stored frozen at -20°C for a longer time. Avoid repeated freezing and thawing.

Note

This product contains sodium azide: a POISONOUS AND HAZARDOUS SUBSTANCE which should be handled by trained staff only.

Applications

- Western Blot (Cell lysate)

Western Blot analysis of HeLa cell lysate with SLC1A2 monoclonal antibody, clone ABED-19 (Cat # MAB20001).

- Immunoprecipitation

Gene Info — SLC1A2

Entrez GeneID[6506](#)**Protein Accession#**[P43004](#)**Gene Name**

SLC1A2

Gene Alias

EAAT2, GLT-1

Gene Description

solute carrier family 1 (glial high affinity glutamate transporter), member 2

Omim ID[600300](#)**Gene Ontology**[Hyperlink](#)**Gene Summary**

This gene encodes a member of a family of solute transporter proteins. The membrane-bound protein is the principal transporter that clears the excitatory neurotransmitter glutamate from the extracellular space at synapses in the central nervous system. Glutamate clearance is necessary for proper synaptic activation and to prevent neuronal damage from excessive activation of glutamate receptors. Mutations in and decreased expression of this protein are associated with amyotrophic lateral sclerosis. Alternatively spliced transcript variants of this gene have been described, but their full-length nature is not known. [provided by RefSeq]

Other Designations

excitatory amino acid transporter 2|excitotoxic amino acid transporter 2|glial high affinity glutamate transporter|glutamate/aspartate transporter II|sodium-dependent glutamate/aspartate transporter 2|solute carrier family 1, member 2

Publication Reference

- [α-Synuclein-carrying astrocytic extracellular vesicles in Parkinson pathogenesis and diagnosis.](#)

Pan Wang, Guoyu Lan, Bin Xu, Zhenwei Yu, Chen Tian, Xia Lei, Wassilios G Meissner, Tao Feng, Ying Yang, Jing Zhang.

Translational Neurodegeneration 2023 Aug; 12(1):40.

Application: Incubation, IP, WB, Human, Mouse, Human plasma, Mouse brain

Pathway

- [Amyotrophic lateral sclerosis \(ALS\)](#)

Disease

- [Alcoholism](#)
- [Child Development Disorders](#)
- [Cognition](#)
- [Genetic Predisposition to Disease](#)
- [Mental Disorders](#)
- [Multiple Sclerosis](#)
- [Personality Tests](#)
- [Postmortem Changes](#)
- [Reward](#)
- [Schizophrenia](#)
- [Schizophrenic Psychology](#)
- [Tobacco Use Disorder](#)
- [Weight Gain](#)