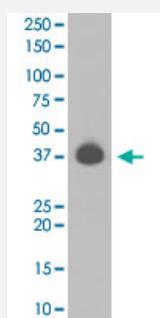


# DUSP6 monoclonal antibody, clone DBE-4

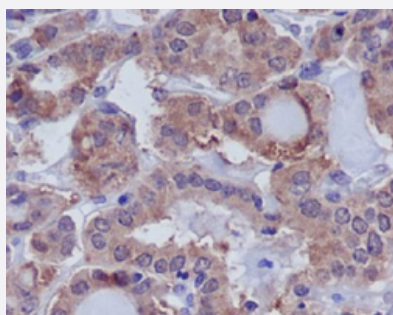
Catalog # MAB19993      Size 100 uL

## Applications



### Western Blot (Cell lysate)

Western Blot analysis of NIH/3T3 cell lysate with DUSP6 monoclonal antibody, clone DBE-4 (Cat # MAB19993).



### Immunohistochemistry (Formalin/PFA-fixed paraffin-embedded sections)

Immunohistochemical staining (Formalin-fixed paraffin-embedded sections) of human thyroid with DUSP6 monoclonal antibody, clone DBE-4 (Cat # MAB19993).

## Specification

<b>Product Description</b>	Rabbit monoclonal antibody raised against synthetic peptide of human DUSP6.
<b>Immunogen</b>	A synthetic peptide corresponding to human DUSP6.
<b>Host</b>	Rabbit
<b>Theoretical MW (kDa)</b>	42.32
<b>Reactivity</b>	Human
<b>Form</b>	Liquid
<b>Purification</b>	Affinity purification

Isotype	IgG
Recommend Usage	Flow Cytometry (1:50) Immunocytochemistry (1:50-1:200) Immunofluorescence (1:50-1:200) Immunohistochemistry (Formalin/PFA-fixed paraffin-embedded sections) (1:50-1:200) Immunoprecipitation (1:50) Western Blot (1:500-1:2000) The optimal working dilution should be determined by the end user.
Storage Buffer	In PBS, 150 mM NaCl, pH 7.4 (50% glycerol, 0.02% sodium azide).
Storage Instruction	Store at -20°C for one year. After reconstitution, at 4°C for one month. It can also be aliquotted and stored frozen at -20°C for a longer time. Avoid repeated freezing and thawing.
Note	This product contains sodium azide: a POISONOUS AND HAZARDOUS SUBSTANCE which should be handled by trained staff only.

## Applications

- Western Blot (Cell lysate)

Western Blot analysis of NIH/3T3 cell lysate with DUSP6 monoclonal antibody, clone DBE-4 (Cat # MAB19993).

- Immunohistochemistry (Formalin/PFA-fixed paraffin-embedded sections)

Immunohistochemical staining (Formalin-fixed paraffin-embedded sections) of human thyroid with DUSP6 monoclonal antibody, clone DBE-4 (Cat # MAB19993).

- Immunocytochemistry

- Immunofluorescence

- Immunoprecipitation

- Flow Cytometry

## Gene Info — DUSP6

Entrez GeneID [1848](#)

Protein Accession# [Q16828](#)

Gene Name DUSP6

Gene Alias	MKP3, PYST1
Gene Description	dual specificity phosphatase 6
Omim ID	<a href="#">602748</a>
Gene Ontology	<a href="#">Hyperlink</a>
Gene Summary	<p>The protein encoded by this gene is a member of the dual specificity protein phosphatase subfamily. These phosphatases inactivate their target kinases by dephosphorylating both the phosphoserine/threonine and phosphotyrosine residues. They negatively regulate members of the mitogen-activated protein (MAP) kinase superfamily (MAPK/ERK, SAPK/JNK, p38), which are associated with cellular proliferation and differentiation. Different members of the family of dual specificity phosphatases show distinct substrate specificities for various MAP kinases, different tissue distribution and subcellular localization, and different modes of inducibility of their expression by extracellular stimuli. This gene product inactivates ERK2, is expressed in a variety of tissues with the highest levels in heart and pancreas, and unlike most other members of this family, is localized in the cytoplasm. Two transcript variants encoding different isoforms have been found for this gene. [provided by RefSeq]</p>
Other Designations	MAP kinase phosphatase 3 serine/threonine specific protein phosphatase

## Pathway

- [MAPK signaling pathway](#)

## Disease

- [Bipolar Disorder](#)
- [Cardiovascular Diseases](#)
- [Diabetes Mellitus](#)
- [Edema](#)
- [Genetic Predisposition to Disease](#)
- [Kidney Failure](#)