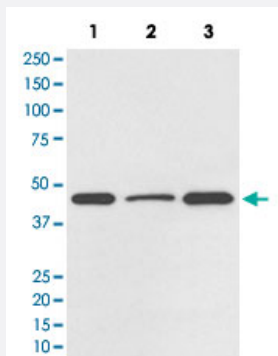


# DUSP1 monoclonal antibody, clone IHB-4

Catalog # MAB19992      Size 100 uL

## Applications



### Western Blot (Cell lysate)

Western Blot analysis of Lane 1: HeLa, Lane 2: NIH/3T3 and Lane 3: PC-12 cell lysates with DUSP1 monoclonal antibody, clone IHB-4 (Cat # MAB19992).

## Specification

<b>Product Description</b>	Rabbit monoclonal antibody raised against synthetic peptide of human DUSP1.
<b>Immunogen</b>	A synthetic peptide corresponding to human DUSP1.
<b>Host</b>	Rabbit
<b>Theoretical MW (kDa)</b>	39.298
<b>Reactivity</b>	Human
<b>Form</b>	Liquid
<b>Purification</b>	Affinity purification
<b>Isotype</b>	IgG

<b>Recommend Usage</b>	Flow Cytometry (1:50) Immunocytochemistry (1:50-1:200) Immunofluorescence (1:50-1:200) Immunohistochemistry (1:50-1:200) Immunoprecipitation (1:50) Western Blot (1:500-1:2000) The optimal working dilution should be determined by the end user.
<b>Storage Buffer</b>	In PBS, 150 mM NaCl, pH 7.4 (50% glycerol, 0.02% sodium azide).
<b>Storage Instruction</b>	Store at -20°C for one year. After reconstitution, at 4°C for one month. It can also be aliquotted and stored frozen at -20°C for a longer time. Avoid repeated freezing and thawing.
<b>Note</b>	This product contains sodium azide: a POISONOUS AND HAZARDOUS SUBSTANCE which should be handled by trained staff only.

## Applications

- Western Blot (Cell lysate)

Western Blot analysis of Lane 1: HeLa, Lane 2: NIH/3T3 and Lane 3: PC-12 cell lysates with DUSP1 monoclonal antibody, clone IHB-4 (Cat # MAB19992).

- Immunohistochemistry

- Immunocytochemistry

- Immunofluorescence

- Immunoprecipitation

- Flow Cytometry

## Gene Info — DUSP1

<b>Entrez GeneID</b>	<a href="#">1843</a>
<b>Protein Accession#</b>	<a href="#">P28562</a>
<b>Gene Name</b>	DUSP1
<b>Gene Alias</b>	CL100, HVH1, MKP-1, MKP1, PTPN10
<b>Gene Description</b>	dual specificity phosphatase 1

Omim ID [600714](#)

Gene Ontology [Hyperlink](#)

#### Gene Summary

The expression of DUSP1 gene is induced in human skin fibroblasts by oxidative/heat stress and growth factors. It specifies a protein with structural features similar to members of the non-receptor-type protein-tyrosine phosphatase family, and which has significant amino-acid sequence similarity to a Tyr/Ser-protein phosphatase encoded by the late gene H1 of vaccinia virus. The bacterially expressed and purified DUSP1 protein has intrinsic phosphatase activity, and specifically inactivates mitogen-activated protein (MAP) kinase in vitro by the concomitant dephosphorylation of both its phosphothreonine and phosphotyrosine residues. Furthermore, it suppresses the activation of MAP kinase by oncogenic ras in extracts of *Xenopus* oocytes. Thus, DUSP1 may play an important role in the human cellular response to environmental stress as well as in the negative regulation of cellular proliferation. [provided by RefSeq]

Other Designations serine/threonine specific protein phosphatase

## Pathway

- [MAPK signaling pathway](#)

## Disease

- [Arthritis](#)
- [Asthma](#)
- [Cardiovascular Diseases](#)
- [Diabetes Mellitus](#)
- [Edema](#)
- [Genetic Predisposition to Disease](#)
- [Kidney Failure](#)
- [Lung Neoplasms](#)
- [Multiple Sclerosis](#)