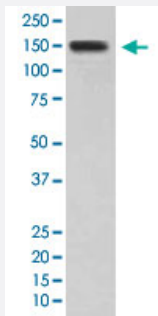


# DSG1 monoclonal antibody, clone ED-4

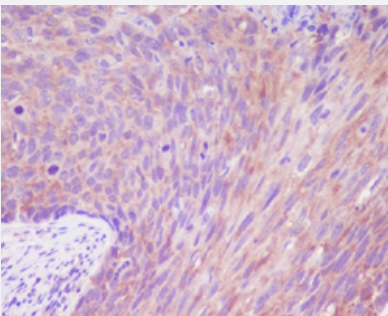
Catalog # MAB19991      Size 100 uL

## Applications



### Western Blot (Tissue lysate)

Western Blot analysis of human skin tissue lysate with DSG1 monoclonal antibody, clone ED-4 (Cat # MAB19991).



### Immunohistochemistry (Formalin/PFA-fixed paraffin-embedded sections)

Immunohistochemical staining (Formalin-fixed paraffin-embedded sections) of human cervix cancer with DSG1 monoclonal antibody, clone ED-4 (Cat # MAB19991).

## Specification

<b>Product Description</b>	Rabbit monoclonal antibody raised against synthetic peptide of human DSG1.
<b>Immunogen</b>	A synthetic peptide corresponding to human DSG1.
<b>Host</b>	Rabbit
<b>Theoretical MW (kDa)</b>	113.748
<b>Reactivity</b>	Human
<b>Form</b>	Liquid
<b>Purification</b>	Affinity purification

Isotype	IgG
Recommend Usage	Immunocytochemistry Immunofluorescence Immunohistochemistry (Formalin/PFA-fixed paraffin-embedded sections) (1:50-1:200) Western Blot (1:500-1:2000) The optimal working dilution should be determined by the end user.
Storage Buffer	In PBS, 150 mM NaCl, pH 7.4 (50% glycerol, 0.02% sodium azide).
Storage Instruction	Store at -20°C for one year. After reconstitution, at 4°C for one month. It can also be aliquotted and stored frozen at -20°C for a longer time. Avoid repeated freezing and thawing.
Note	This product contains sodium azide: a POISONOUS AND HAZARDOUS SUBSTANCE which should be handled by trained staff only.

## Applications

- Western Blot (Tissue lysate)

Western Blot analysis of human skin tissue lysate with DSG1 monoclonal antibody, clone ED-4 (Cat # MAB19991).

- Immunohistochemistry (Formalin/PFA-fixed paraffin-embedded sections)

Immunohistochemical staining (Formalin-fixed paraffin-embedded sections) of human cervix cancer with DSG1 monoclonal antibody, clone ED-4 (Cat # MAB19991).

- Immunocytochemistry

- Immunofluorescence

## Gene Info — DSG1

Entrez GeneID	<a href="#">1828</a>
Protein Accession#	<a href="#">Q02413</a>
Gene Name	DSG1
Gene Alias	CDHF4, DG1, DSG
Gene Description	desmoglein 1
Omim ID	<a href="#">125670</a> <a href="#">148700</a>
Gene Ontology	<a href="#">Hyperlink</a>

**Gene Summary**

Desmosomes are cell-cell junctions between epithelial, myocardial and certain other cell types. Desmoglein 1 is a calcium-binding transmembrane glycoprotein component of desmosomes in vertebrate epithelial cells. Currently, three desmoglein subfamily members have been identified and all are members of the cadherin cell adhesion molecule superfamily. These desmoglein gene family members are located in a cluster on chromosome 18. The protein encoded by this gene has been identified as the autoantigen of the autoimmune skin blistering disease pemphigus foliaceus. [provided by RefSeq]

**Other Designations**

desmosomal glycoprotein 1|pemphigus foliaceus antigen

**Disease**

- [Pemphigus](#)