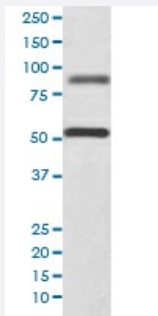


DCLK1 monoclonal antibody, clone AAFA-4

Catalog # MAB19973 Size 100 uL

Applications



Western Blot (Cell lysate)

Western blot analysis of SH-SY5Y cell lysate with DCLK1 monoclonal antibody.

Specification

Product Description Rabbit monoclonal antibody raised against synthetic peptide of human DCLK1.

Immunogen A synthetic peptide corresponding to human DCLK1.

Host Rabbit

Reactivity Human

Form Liquid

Purification Affinity purification

Isotype IgG

Recommend Usage
 Immunocytochemistry (1:50-1:200)
 Immunofluorescence (1:50-1:200)
 Immunohistochemistry (1:50-1:200)
 Western Blot (1:500-1:2000)
 The optimal working dilution should be determined by the end user.

Storage Buffer In PBS, pH 7.4, 150mM NaCl, 0.02% sodium azide and 50% glycerol.

Storage Instruction

Store at -20°C for one year. After reconstitution, at 4°C for one month. It can also be aliquotted and stored frozen at -20°C for a longer time. Avoid repeated freezing and thawing.

Note

This product contains sodium azide: a POISONOUS AND HAZARDOUS SUBSTANCE which should be handled by trained staff only.

Applications

- Western Blot (Cell lysate)

Western blot analysis of SH-SY5Y cell lysate with DCLK1 monoclonal antibody.

- Immunohistochemistry (Formalin/PFA-fixed paraffin-embedded sections)

- Immunocytochemistry

- Immunofluorescence

Gene Info — DCLK1

Entrez GeneID[9201](#)**Protein Accession#**[O15075](#)**Gene Name**

DCLK1

Gene Alias

DCAMKL1, DCDC3A, DCLK, KIAA0369

Gene Description

doublecortin-like kinase 1

Omim ID[604742](#)**Gene Ontology**[Hyperlink](#)**Gene Summary**

DCAMKL1 is a microtubule-associated protein that phosphorylates itself and myelin basic protein (MBP; MIM 159430). DCAMKL1 has microtubule polymerizing activity that is independent of its protein kinase activity (Lin et al., 2000 [PubMed 11124993]).[supplied by OMIM]

Other Designations

OTTHUMP00000018250|doublecortin and CaM kinase-like 1

Disease

- [Cognition](#)

- [Intelligence Tests](#)
- [Memory](#)
- [Tobacco Use Disorder](#)