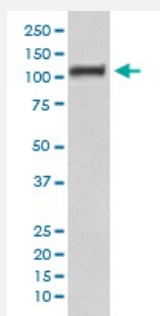


DAXX monoclonal antibody, clone EEI-4

Catalog # MAB19972 Size 100 uL

Applications



Western Blot (Cell lysate)

Western blot analysis of HeLa cell lysate with DAXX monoclonal antibody.

Specification

Product Description Rabbit monoclonal antibody raised against synthetic peptide of human DAXX.

Immunogen A synthetic peptide corresponding to human DAXX.

Host Rabbit

Reactivity Human

Form Liquid

Purification Affinity purification

Isotype IgG

Recommend Usage

- Flow Cytometry (1:50)
- Immunocytochemistry (1:50-1:200)
- Immunofluorescence (1:50-1:200)
- Immunohistochemistry (1:50-1:200)
- Western Blot (1:500-1:2000)
- The optimal working dilution should be determined by the end user.

Storage Buffer In PBS, pH 7.4, 150mM NaCl, 0.02% sodium azide and 50% glycerol.

Storage Instruction

Store at -20°C for one year. After reconstitution, at 4°C for one month. It can also be aliquotted and stored frozen at -20°C for a longer time. Avoid repeated freezing and thawing.

Note

This product contains sodium azide: a POISONOUS AND HAZARDOUS SUBSTANCE which should be handled by trained staff only.

Applications

- Western Blot (Cell lysate)

Western blot analysis of HeLa cell lysate with DAXX monoclonal antibody.

- Immunohistochemistry (Formalin/PFA-fixed paraffin-embedded sections)

- Immunocytochemistry

- Immunofluorescence

- Flow Cytometry

Gene Info — DAXX

Entrez GeneID[1616](#)**Protein Accession#**[Q9UER7](#)**Gene Name**

DAXX

Gene Alias

BING2, DAP6, EAP1, MGC126245, MGC126246

Gene Description

death-domain associated protein

Omim ID[603186](#)**Gene Ontology**[Hyperlink](#)

Gene Summary

This gene encodes a multifunctional protein that resides in multiple locations in the nucleus and in the cytoplasm. It interacts with a wide variety of proteins, such as apoptosis antigen Fas, centromere protein C, and transcription factor erythroblastosis virus E26 oncogene homolog 1. In the nucleus, the encoded protein functions as a potent transcription repressor that binds to sumoylated transcription factors. Its repression can be relieved by the sequestration of this protein into promyelocytic leukemia nuclear bodies or nucleoli. This protein also associates with centromeres in G2 phase. In the cytoplasm, the encoded protein may function to regulate apoptosis. The subcellular localization and function of this protein are modulated by post-translational modifications, including sumoylation, phosphorylation and polyubiquitination. Alternative splicing results in multiple transcript variants. [provided by RefSeq]

Other Designations

CENP-C binding protein|ETS1-associated protein 1|Fas-binding protein|OTTHUMP00000029289|OTTHUMP00000029290|death-associated protein 6

Pathway

- [Amyotrophic lateral sclerosis \(ALS\)](#)
- [MAPK signaling pathway](#)

Disease

- [Diabetes Mellitus](#)
- [Disease Susceptibility](#)
- [Genetic Predisposition to Disease](#)
- [Lupus Erythematosus](#)