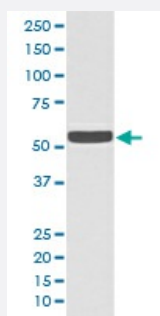


KRT2 monoclonal antibody, clone GGG-11

Catalog # MAB19960 Size 100 uL

Applications



Western Blot (Cell lysate)

Western blot analysis of A431 cell lysate with KRT2 monoclonal antibody.

Specification

| | |
|----------------------------|---|
| Product Description | Rabbit monoclonal antibody raised against synthetic peptide of human KRT2. |
| Immunogen | A synthetic peptide corresponding to human KRT2. |
| Host | Rabbit |
| Reactivity | Human |
| Form | Liquid |
| Purification | Affinity purification |
| Isotype | IgG |
| Recommend Usage | Immunohistochemistry (1:50-1:200) Western Blot (1:1000-1:2000) The optimal working dilution should be determined by the end user. |
| Storage Buffer | In PBS, pH 7.4, 150mM NaCl, 0.02% sodium azide and 50% glycerol. |
| Storage Instruction | Store at -20°C for one year. After reconstitution, at 4°C for one month. It can also be aliquotted and stored frozen at -20°C for a longer time. Avoid repeated freezing and thawing. |

Note

This product contains sodium azide: a POISONOUS AND HAZARDOUS SUBSTANCE which should be handled by trained staff only.

Applications

- Western Blot (Cell lysate)

Western blot analysis of A431 cell lysate with KRT2 monoclonal antibody.

- Immunohistochemistry (Formalin/PFA-fixed paraffin-embedded sections)

Gene Info — KRT2

| | |
|---------------|----------------------|
| Entrez GeneID | 3849 |
|---------------|----------------------|

| | |
|--------------------|------------------------|
| Protein Accession# | P35908 |
|--------------------|------------------------|

| | |
|-----------|------|
| Gene Name | KRT2 |
|-----------|------|

| | |
|------------|--|
| Gene Alias | KRT2A, KRT2E, KRTE, MGC116967, MGC116968 |
|------------|--|

| | |
|------------------|-----------|
| Gene Description | keratin 2 |
|------------------|-----------|

| | |
|---------|-------------------------------|
| Omim ID | 146800 600194 |
|---------|-------------------------------|

| | |
|---------------|---------------------------|
| Gene Ontology | Hyperlink |
|---------------|---------------------------|

| | |
|--------------|---|
| Gene Summary | The protein encoded by this gene is a member of the keratin gene family. The type II cytokeratins consist of basic or neutral proteins which are arranged in pairs of heterotypic keratin chains coexpressed during differentiation of simple and stratified epithelial tissues. This type II cytokeratin is expressed largely in the upper spinous layer of epidermal keratinocytes and mutations in this gene have been associated with bullous congenital ichthyosiform erythroderma. The type II cytokeratins are clustered in a region of chromosome 12q12-q13. [provided by RefSeq] |
|--------------|---|

| | |
|--------------------|---|
| Other Designations | epidermal ichthyosis bullosa of Siemens |
|--------------------|---|