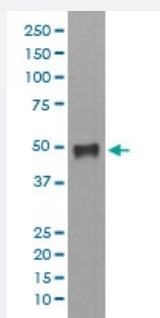


# KRT17 monoclonal antibody, clone DIB-11

Catalog # MAB19955      Size 100 uL

## Applications



### Western Blot (Cell lysate)

Western blot analysis of HaCaT cell lysate with KRT17 monoclonal antibody.

## Specification

**Product Description** Rabbit monoclonal antibody raised against synthetic peptide of human KRT17.

**Immunogen** A synthetic peptide corresponding to human KRT17.

**Host** Rabbit

**Reactivity** Human

**Form** Liquid

**Purification** Affinity purification

**Isotype** IgG

**Recommend Usage**

- Flow Cytometry (1:30)
- Immunocytochemistry (1:50-1:200)
- Immunofluorescence (1:50-1:200)
- Immunohistochemistry (1:50-1:200)
- Western Blot (1:1000-1:2000)
- The optimal working dilution should be determined by the end user.

**Storage Buffer** In PBS, pH 7.4, 150mM NaCl, 0.02% sodium azide and 50% glycerol.

**Storage Instruction**

Store at -20°C for one year. After reconstitution, at 4°C for one month. It can also be aliquotted and stored frozen at -20°C for a longer time. Avoid repeated freezing and thawing.

**Note**

This product contains sodium azide: a POISONOUS AND HAZARDOUS SUBSTANCE which should be handled by trained staff only.

## Applications

- Western Blot (Cell lysate)

Western blot analysis of HaCaT cell lysate with KRT17 monoclonal antibody.

- Immunohistochemistry (Formalin/PFA-fixed paraffin-embedded sections)

- Immunocytochemistry

- Immunofluorescence

- Flow Cytometry

## Gene Info — KRT17

**Entrez GeneID**[3872](#)**Protein Accession#**[Q04695](#)**Gene Name**

KRT17

**Gene Alias**

K17, PC, PC2, PCHC1

**Gene Description**

keratin 17

**Omim ID**[148069](#) [167210](#) [184500](#)**Gene Ontology**[Hyperlink](#)**Gene Summary**

This gene encodes the type I intermediate filament chain keratin 17, expressed in nail bed, hair follicle, sebaceous glands, and other epidermal appendages. Mutations in this gene lead to Jackson-Lawler type pachyonychia congenita and steatocystoma multiplex. [provided by RefSeq]

**Other Designations**

cytokeratin-17