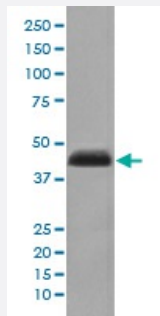


KRT15 monoclonal antibody, clone DOB-11

Catalog # MAB19953 Size 100 uL

Applications



Western Blot (Cell lysate)

Western blot analysis of human fetal thymus lysate with KRT15 monoclonal antibody.

Specification

Product Description Rabbit monoclonal antibody raised against synthetic peptide of human KRT15.

Immunogen A synthetic peptide corresponding to human KRT15.

Host Rabbit

Reactivity Human

Form Liquid

Purification Affinity purification

Isotype IgG

Recommend Usage

- Flow Cytometry (1:50)
- Immunocytochemistry (1:50-1:200)
- Immunofluorescence (1:50-1:200)
- Immunohistochemistry (1:50-1:200)
- Western Blot (1:1000-1:2000)
- The optimal working dilution should be determined by the end user.

Storage Buffer In PBS, pH 7.4, 150mM NaCl, 0.02% sodium azide and 50% glycerol.

Storage Instruction

Store at -20°C for one year. After reconstitution, at 4°C for one month. It can also be aliquotted and stored frozen at -20°C for a longer time. Avoid repeated freezing and thawing.

Note

This product contains sodium azide: a POISONOUS AND HAZARDOUS SUBSTANCE which should be handled by trained staff only.

Applications

- Western Blot (Cell lysate)

Western blot analysis of human fetal thymus lysate with KRT15 monoclonal antibody.

- Immunohistochemistry (Formalin/PFA-fixed paraffin-embedded sections)

- Immunocytochemistry

- Immunofluorescence

- Flow Cytometry

Gene Info — KRT15

Entrez GeneID[3866](#)**Protein Accession#**[P19012](#)**Gene Name**

KRT15

Gene Alias

CK15, K15, K1CO

Gene Description

keratin 15

Omim ID[148030](#)**Gene Ontology**[Hyperlink](#)**Gene Summary**

The protein encoded by this gene is a member of the keratin gene family. The keratins are intermediate filament proteins responsible for the structural integrity of epithelial cells and are subdivided into cytokeratins and hair keratins. Most of the type I cytokeratins consist of acidic proteins which are arranged in pairs of heterotypic keratin chains and are clustered in a region on chromosome 17q21.2. [provided by RefSeq]

Other Designations

OTTHUMP00000165060|cytokeratin 15|keratin-15, basic|keratin-15, beta|type I cytoskeletal 15