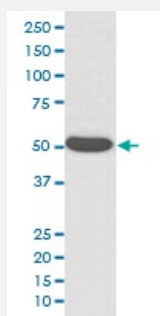


# KRT14 monoclonal antibody, clone FEF-11

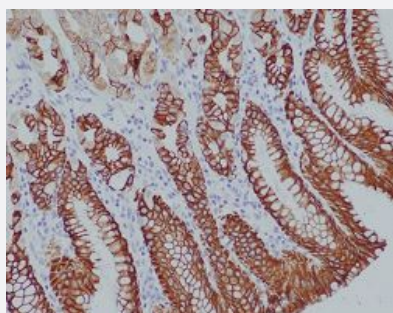
Catalog # MAB19952      Size 100 uL

## Applications



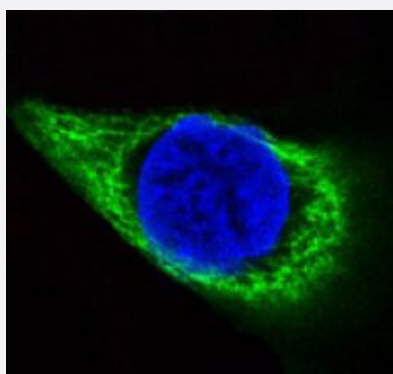
### Western Blot (Cell lysate)

Western blot analysis of A431 cell lysate with KRT14 monoclonal antibody.



### Immunohistochemistry (Formalin/PFA-fixed paraffin-embedded sections)

Immunohistochemical staining of paraffin-embedded human stomach with KRT14 monoclonal antibody.



### Immunofluorescence

Immunofluorescent analysis of HaCaT cells with KRT14 monoclonal antibody.

## Specification

### Product Description

Rabbit monoclonal antibody raised against synthetic peptide of human KRT14.

<b>Immunogen</b>	A synthetic peptide corresponding to human KRT14.
<b>Host</b>	Rabbit
<b>Reactivity</b>	Human
<b>Form</b>	Liquid
<b>Purification</b>	Affinity purification
<b>Isotype</b>	IgG
<b>Recommend Usage</b>	Immunocytochemistry (1:50-1:200) Immunofluorescence (1:50-1:200) Immunohistochemistry (1:50-1:200) Western Blot (1:1000-1:2000) The optimal working dilution should be determined by the end user.
<b>Storage Buffer</b>	In PBS, pH 7.4, 150mM NaCl, 0.02% sodium azide and 50% glycerol.
<b>Storage Instruction</b>	Store at -20°C for one year. After reconstitution, at 4°C for one month. It can also be aliquotted and stored frozen at -20°C for a longer time. Avoid repeated freezing and thawing.
<b>Note</b>	This product contains sodium azide: a POISONOUS AND HAZARDOUS SUBSTANCE which should be handled by trained staff only.

## Applications

- Western Blot (Cell lysate)

Western blot analysis of A431 cell lysate with KRT14 monoclonal antibody.

- Immunohistochemistry (Formalin/PFA-fixed paraffin-embedded sections)

Immunohistochemical staining of paraffin-embedded human stomach with KRT14 monoclonal antibody.

- Immunocytochemistry

- Immunofluorescence

Immunofluorescent analysis of HaCaT cells with KRT14 monoclonal antibody.

## Gene Info — KRT14

**Entrez GeneID** [3861](#)

**Protein Accession#** [P02533](#)

Gene Name	KRT14
Gene Alias	CK14, EBS3, EBS4, K14, NFJ
Gene Description	keratin 14
Omim ID	<a href="#">125595</a> <a href="#">131800</a> <a href="#">148066</a> <a href="#">161000</a> <a href="#">601001</a>
Gene Ontology	<a href="#">Hyperlink</a>
Gene Summary	<p>This gene encodes a member of the keratin family, the most diverse group of intermediate filaments. This gene product, a type I keratin, is usually found as a heterotetramer with two keratin 5 molecules, a type II keratin. Together they form the cytoskeleton of epithelial cells. Mutations in the genes for these keratins are associated with epidermolysis bullosa simplex. At least one pseudogene has been identified at 17p12-p11. [provided by RefSeq]</p>
Other Designations	cytokeratin 14 keratin 14 (epidermolysis bullosa simplex, Dowling-Meara, Koebner)

## Disease

- [Cleft Lip](#)
- [Cleft Palate](#)