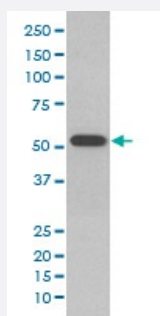


KRT10 monoclonal antibody, clone EEF-11

Catalog # MAB19949 Size 100 uL

Applications



Western Blot (Cell lysate)

Western blot analysis of A431 cell lysate with KRT10 monoclonal antibody.

Specification

Product Description Rabbit monoclonal antibody raised against synthetic peptide of human KRT10.

Immunogen A synthetic peptide corresponding to human KRT10.

Host Rabbit

Reactivity Human

Form Liquid

Purification Affinity purification

Isotype IgG

Recommend Usage

- Immunocytochemistry (1:50-1:200)
- Immunofluorescence (1:50-1:200)
- Immunohistochemistry (1:50-1:200)
- Western Blot (1:500-1:2000)
- The optimal working dilution should be determined by the end user.

Storage Buffer In PBS, pH 7.4, 150mM NaCl, 0.02% sodium azide and 50% glycerol.

Storage Instruction

Store at -20°C for one year. After reconstitution, at 4°C for one month. It can also be aliquotted and stored frozen at -20°C for a longer time. Avoid repeated freezing and thawing.

Note

This product contains sodium azide: a POISONOUS AND HAZARDOUS SUBSTANCE which should be handled by trained staff only.

Applications

- Western Blot (Cell lysate)

Western blot analysis of A431 cell lysate with KRT10 monoclonal antibody.

- Immunohistochemistry (Formalin/PFA-fixed paraffin-embedded sections)
- Immunocytochemistry
- Immunofluorescence

Gene Info — KRT10

Entrez GeneID[3858](#)**Protein Accession#**[P13645](#)**Gene Name**

KRT10

Gene Alias

CK10, K10, KPP

Gene Description

keratin 10

Omim ID[113800](#) [148080](#) [600648](#) [607602](#)**Gene Ontology**[Hyperlink](#)**Gene Summary**

This gene encodes a member of the type I (acidic) cytokeratin family, which belongs to the superfamily of intermediate filament (IF) proteins. Keratins are heteropolymeric structural proteins which form the intermediate filament. These filaments, along with actin microfilaments and microtubules, compose the cytoskeleton of epithelial cells. Mutations in this gene are associated with epidermolytic hyperkeratosis. This gene is located within a cluster of keratin family members on chromosome 17q21. [provided by RefSeq]

Other Designations

cytokeratin 10