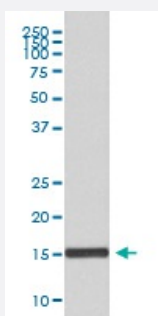


CYCS monoclonal antibody, clone FOA-3

Catalog # MAB19945 Size 100 uL

Applications



Western Blot (Cell lysate)

Western blot analysis of HeLa cell lysate with CYCS monoclonal antibody.

Specification

Product Description Rabbit monoclonal antibody raised against synthetic peptide of human CYCS.

Immunogen A synthetic peptide corresponding to human CYCS.

Host Rabbit

Reactivity Human

Form Liquid

Purification Affinity purification

Isotype IgG

Recommend Usage

- Immunocytochemistry (1:50-1:200)
- Immunofluorescence (1:50-1:200)
- Immunohistochemistry (1:50-1:200)
- Immunoprecipitation (1:50)
- The optimal working dilution should be determined by the end user.

Storage Buffer In PBS, pH 7.4, 150mM NaCl, 0.02% sodium azide and 50% glycerol.

Storage Instruction

Store at -20°C for one year. After reconstitution, at 4°C for one month. It can also be aliquotted and stored frozen at -20°C for a longer time. Avoid repeated freezing and thawing.

Note

This product contains sodium azide: a POISONOUS AND HAZARDOUS SUBSTANCE which should be handled by trained staff only.

Applications

- Western Blot (Cell lysate)

Western blot analysis of HeLa cell lysate with CYCS monoclonal antibody.

- Immunohistochemistry (Formalin/PFA-fixed paraffin-embedded sections)

- Immunocytochemistry

- Immunofluorescence

- Immunoprecipitation

Gene Info — CYCS

Entrez GeneID[54205](#)**Protein Accession#**[P99999](#)**Gene Name**

CYCS

Gene Alias

CYC, HCS

Gene Description

cytochrome c, somatic

Omim ID[123970](#)**Gene Ontology**[Hyperlink](#)**Gene Summary**

This gene encodes cytochrome c, a component of the electron transport chain in mitochondria. The heme group of cytochrome c accepts electrons from the b-c1 complex and transfers electrons to the cytochrome oxidase complex. Cytochrome c is also involved in initiation of apoptosis. Upon release of cytochrome c to the cytoplasm, the protein binds apoptotic protease activating factor which activates the apoptotic initiator procaspase 9. Many cytochrome c pseudogenes exist, scattered throughout the human genome. [provided by RefSeq]

Other Designations

cytochrome c

Pathway

- [Amyotrophic lateral sclerosis \(ALS\)](#)
- [Apoptosis](#)
- [Colorectal cancer](#)
- [p53 signaling pathway](#)
- [Pathways in cancer](#)
- [Small cell lung cancer](#)

Disease

- [Thrombocytopenia](#)