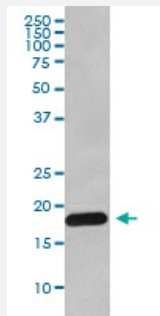


PPIB monoclonal antibody, clone DOO-16

Catalog # MAB19942 Size 100 uL

Applications



Western Blot (Cell lysate)

Western blot analysis of HepG2 cell lysate with PPIB monoclonal antibody.

Specification

Product Description	Rabbit monoclonal antibody raised against synthetic peptide of human PPIB.
Immunogen	A synthetic peptide corresponding to human PPIB.
Host	Rabbit
Reactivity	Human
Form	Liquid
Purification	Affinity purification
Isotype	IgG
Recommend Usage	Western Blot (1:500-1:2000) The optimal working dilution should be determined by the end user.
Storage Buffer	In PBS, pH 7.4, 150mM NaCl, 0.02% sodium azide and 50% glycerol.
Storage Instruction	Store at -20°C for one year. After reconstitution, at 4°C for one month. It can also be aliquotted and stored frozen at -20°C for a longer time. Avoid repeated freezing and thawing.

Note

This product contains sodium azide: a POISONOUS AND HAZARDOUS SUBSTANCE which should be handled by trained staff only.

Applications

- Western Blot (Cell lysate)

Western blot analysis of HepG2 cell lysate with PPIB monoclonal antibody.

Gene Info — PPIB

Entrez GeneID [5479](#)

Protein Accession# [P23284](#)

Gene Name PPIB

Gene Alias CYP-S1, CYPB, MGC14109, MGC2224, SCYLP

Gene Description peptidylprolyl isomerase B (cyclophilin B)

Omim ID [123841](#)

Gene Ontology [Hyperlink](#)

Gene Summary The protein encoded by this gene is a cyclosporine-binding protein and is mainly located within the endoplasmic reticulum. It is associated with the secretory pathway and released in biological fluids. This protein can bind to cells derived from T- and B-lymphocytes, and may regulate cyclosporine A-mediated immunosuppression. [provided by RefSeq]

Other Designations PPlase|S-cyclophilin|cyclophilin B|cyclophilin-like protein|peptidyl-prolyl cis-trans isomerase B|peptidylprolyl isomerase B|rotamase

Disease

- [Disease Progression](#)
- [Disease Susceptibility](#)
- [HIV Infections](#)