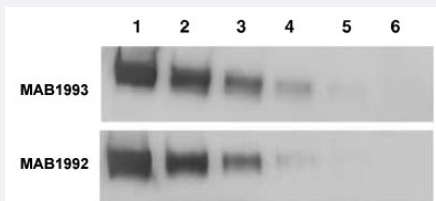


# MSLN monoclonal antibody, clone MN-1

Catalog # MAB1993      Size 100 ug

## Applications

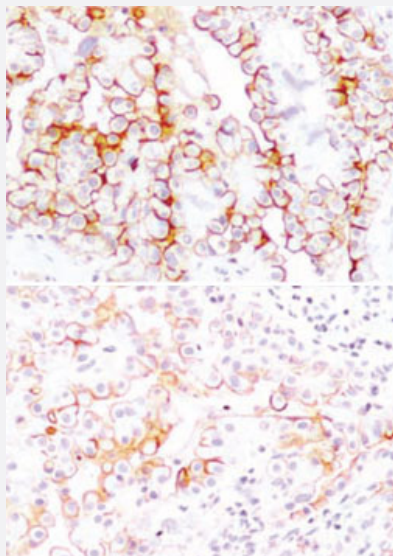


### Western Blot (Recombinant protein)

Western blot analysis of human MSLN recombinant protein at 100 ng (lane 1), 25 ng (lane 2), 6 ng (lane 3), 2 ng (lane 4) and 0.4 ng (lane 5) with MSLN monoclonal antibodies at 1:1000 dilution. Lane 6 contains 50 ng of human CDC25 recombinant protein.

Top panel: Cat # MAB1993.

Bottom panel: Cat # MAB1992.



### Immunohistochemistry (Formalin/PFA-fixed paraffin-embedded sections)

Immunohistochemical staining (Formalin-fixed paraffin-embedded sections) of human mesothelioma tissues with MSLN monoclonal antibodies at 1:100 dilution.

Top panel: Cat # MAB1992.

Bottom panel: Cat # MAB1993.

## Specification

Product Description	Mouse monoclonal antibody raised against partial recombinant MSLN.
Immunogen	Recombinant protein corresponding to extracellular region of human MSLN.
Host	Mouse
Reactivity	Human

Specificity	This antibody is directed against human mesothelin protein.
Form	Liquid
Quality Control Testing	Antibody Reactive Against Recombinant Protein.
Recommend Usage	Western Blot (1:1000) Immunohistochemistry (1:100) The optimal working dilution should be determined by the end user.
Storage Buffer	In 20 mM KH <sub>2</sub> PO <sub>4</sub> , 150 mM NaCl, pH 7.2 (0.01% sodium azide)
Storage Instruction	Store at 4°C. For long term storage store at -20°C. Aliquot to avoid repeated freezing and thawing.
Note	This product contains sodium azide: a POISONOUS AND HAZARDOUS SUBSTANCE which should be handled by trained staff only.

## Applications

- Western Blot (Recombinant protein)

Western blot analysis of human MSLN recombinant protein at 100 ng (lane 1), 25 ng (lane 2), 6 ng (lane 3), 2 ng (lane 4) and 0.4 ng (lane 5) with MSLN monoclonal antibodies at 1:1000 dilution. Lane 6 contains 50 ng of human CDC25 recombinant protein.

Top panel: Cat # MAB1993.

Bottom panel: Cat # MAB1992.

- Immunohistochemistry (Formalin/PFA-fixed paraffin-embedded sections)

Immunohistochemical staining (Formalin-fixed paraffin-embedded sections) of human mesothelioma tissues with MSLN monoclonal antibodies at 1:100 dilution.

Top panel: Cat # MAB1992.

Bottom panel: Cat # MAB1993.

- Enzyme-linked Immunoabsorbent Assay

## Gene Info — MSLN

Entrez GeneID	<a href="#">10232</a>
Protein Accession#	<a href="#">NP_005814:Q13421</a>
Gene Name	MSLN
Gene Alias	CAK1, MPF, SMR
Gene Description	mesothelin

Omim ID	<a href="#">601051</a>
Gene Ontology	<a href="#">Hyperlink</a>
Gene Summary	An antibody that reacts with ovarian cancers and mesotheliomas was used to isolate a cell surface antigen named mesothelin. Although the function of mesothelin is unknown, it may play a role in cellular adhesion and is present on mesothelium, mesotheliomas, and ovarian cancers. This gene encodes a preproprotein that is cleaved into two products, megakaryocyte potentiating factor and mesothelin. Alternative splicing results in multiple transcript variants. [provided by RefSeq]
Other Designations	megakaryocyte potentiating factor

## Publication Reference

- [Mesothelin expression in human lung cancer.](#)

Ho M, Bera TK, Willingham MC, Onda M, Hassan R, FitzGerald D, Pastan I.

Clinical Cancer Research 2007 Mar; 13(5):1571.

Application: Flow, Cyt, IHC-P, WB, Human , A-549, EKVX, NCI-H322M, NCI-H522, NCI-H460 cells, Human lung cancer tissues

- [New monoclonal antibodies to mesothelin useful for immunohistochemistry, fluorescence-activated cell sorting, Western blotting, and ELISA.](#)

Onda M, Willingham M, Nagata S, Bera TK, Beers R, Ho M, Hassan R, Kreitman RJ, Pastan I.

Clinical Cancer Research 2005 Aug; 11(16):5840.

Application: ELISA, Flow Cyt, IHC-P, WB-Ce, Human, A1847, H226, HeLa, Panc3.014 cells, Human ovarian cancer

- [Isolation and characterization of a monoclonal antibody, K1, reactive with ovarian cancers and normal mesothelium.](#)

Chang K, Pastan I, Willingham MC.

International Journal of Cancer 1992 Feb; 50(3):373.

## Disease

- [Adenocarcinoma](#)
- [Asbestosis](#)
- [Esophageal Neoplasms](#)
- [Mesothelioma](#)
- [Occupational Diseases](#)

- [Pleural Neoplasms](#)