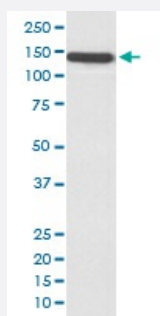


BCL11B monoclonal antibody, clone AODC-2

Catalog # MAB19924 Size 100 uL

Applications



Western Blot (Cell lysate)

Western blot analysis of Jurkat cell lysate with BCL11B monoclonal antibody.

Specification

Product Description	Rabbit monoclonal antibody raised against synthetic peptide of human BCL11B.
Immunogen	A synthetic peptide corresponding to human BCL11B.
Host	Rabbit
Reactivity	Human
Form	Liquid
Purification	Affinity purification
Isotype	IgG
Recommend Usage	Western Blot (1:500-1:2000) The optimal working dilution should be determined by the end user.
Storage Buffer	In PBS, pH 7.4, 150mM NaCl, 0.02% sodium azide and 50% glycerol.
Storage Instruction	Store at -20°C for one year. After reconstitution, at 4°C for one month. It can also be aliquotted and stored frozen at -20°C for a longer time. Avoid repeated freezing and thawing.

Note

This product contains sodium azide: a POISONOUS AND HAZARDOUS SUBSTANCE which should be handled by trained staff only.

Applications

- Western Blot (Cell lysate)

Western blot analysis of Jurkat cell lysate with BCL11B monoclonal antibody.

Gene Info — BCL11B

Entrez GeneID [64919](#)

Protein Accession# [Q9C0K0](#)

Gene Name BCL11B

Gene Alias CTIP-2, CTIP2, RIT1, hRIT1-alpha

Gene Description B-cell CLL/lymphoma 11B (zinc finger protein)

Omim ID [606558](#)

Gene Ontology [Hyperlink](#)

Gene Summary This gene encodes a C2H2-type zinc finger protein and is closely related to BCL11A, a gene whose translocation may be associated with B-cell malignancies. The specific function of this gene has not yet been determined. Two alternatively spliced transcript variants, which encode distinct isoforms, have been reported. [provided by RefSeq]

Other Designations B-cell CLL/lymphoma 11B|B-cell CLL/lymphoma 11B/T-cell receptor delta constant region fusion protein|B-cell lymphoma/leukaemia 11B|BCL11B/TRDC fusion|OTTHUMP00000067187|zinc finger protein hRit1 alpha