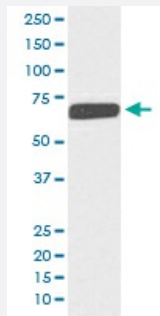


COL10A1 monoclonal antibody, clone AOA3-3

Catalog # MAB19912 Size 100 uL

Applications



Western Blot (Cell lysate)

Western blot analysis of human fetal skin lysate with COL10A1 monoclonal antibody.

Specification

Product Description	Rabbit monoclonal antibody raised against synthetic peptide of human COL10A1.
Immunogen	A synthetic peptide corresponding to human COL10A1.
Host	Rabbit
Reactivity	Human
Form	Liquid
Purification	Affinity purification
Isotype	IgG
Recommend Usage	Western Blot (1:500-1:2000) The optimal working dilution should be determined by the end user.
Storage Buffer	In PBS, pH 7.4, 150mM NaCl, 0.02% sodium azide and 50% glycerol.
Storage Instruction	Store at -20°C for one year. After reconstitution, at 4°C for one month. It can also be aliquotted and stored frozen at -20°C for a longer time. Avoid repeated freezing and thawing.

Note

This product contains sodium azide: a POISONOUS AND HAZARDOUS SUBSTANCE which should be handled by trained staff only.

Applications

- Western Blot (Cell lysate)

Western blot analysis of human fetal skin lysate with COL10A1 monoclonal antibody.

Gene Info — COL10A1

Entrez GeneID [1300](#)

Protein Accession# [Q03692](#)

Gene Name COL10A1

Gene Alias -

Gene Description collagen, type X, alpha 1

Omim ID [120110](#)

Gene Ontology [Hyperlink](#)

Gene Summary This gene encodes the alpha chain of type X collagen, a short chain collagen expressed by hypertrophic chondrocytes during endochondral ossification. Unlike type VIII collagen, the other short chain collagen, type X collagen is a homotrimer. Mutations in this gene are associated with Schmid type metaphyseal chondrodysplasia (SMCD) and Japanese type spondylometaphyseal dysplasia (SMD). [provided by RefSeq]

Other Designations OTTHUMP00000017049|OTTHUMP00000040411|Schmid metaphyseal chondrodysplasia|collagen X, alpha-1 polypeptide|type X collagen alpha 1

Disease

- [Genetic Predisposition to Disease](#)
- [Intervertebral Disk Displacement](#)