

# Keratin monoclonal antibody, clone C11

Catalog # MAB1991      Size 100 ug

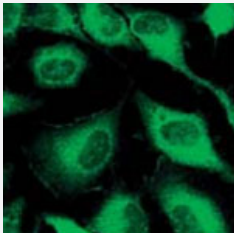
## Applications

### Western Blot (Tissue lysate)



Western blot using Keratin monoclonal antibody, clone C11 (Cat # MAB1991). This antibody recognizes a single 56 KDa band corresponding to human Keratin as confirmed by the position of molecular weight markers (not shown). Approximately 100 ng of keratin from human epidermis (Sigma p/n K0253) was applied under reducing conditions to a pre-cast 4-20% iGel from Gradipore Inc. A 1 : 400 dilution of Keratin monoclonal antibody, clone C11 was used for 2h followed by detection using a 1 : 5,000 dilution of IRDye™800 conjugated Goat-a-Mouse IgG [H&L] and visualization using the Odyssey® Infrared Imaging System developed by LI-COR. IRDye is a trademark of LI-COR, Inc.

### Immunofluorescence



Immunofluorescence microscopy using Keratin monoclonal antibody, clone C11 (Cat # MAB1991). Confocal slices of HeLa cells are between 0.5 and 0.6 um where the image is taken near the bottom of the cell.

## Specification

Product Description	Mouse monoclonal antibody raised against native Keratin.
Immunogen	Native purified human Keratin.
Host	Mouse
Theoretical MW (kDa)	56, 46, 45, 40

Reactivity	Human
Specificity	This protein A purified mouse monoclonal antibody reacts specifically with keratins from human tissues and derived cell lines. This antibody reacts with keratin (56 KDa), keratin 17 (46 KDa), keratin 18 (45 KDa) and keratin 19 (40 KDa) derived from human. No reaction is expected against other filament proteins including vimentin, desmin and neurofilament protein.
Form	Liquid
Isotype	IgG1
Quality Control Testing	Antibody Reactive Against Native Purified Protein.
Recommend Usage	The optimal working dilution should be determined by the end user.
Storage Buffer	In 20 mM KH <sub>2</sub> PO <sub>4</sub> , 150 mM NaCl, pH 7.2 (0.01% sodium azide)
Storage Instruction	Store at 4°C. For long term storage store at -20°C. Aliquot to avoid repeated freezing and thawing.
Note	This product contains sodium azide: a POISONOUS AND HAZARDOUS SUBSTANCE which should be handled by trained staff only.

## Applications

- Western Blot (Tissue lysate)

Western blot using Keratin monoclonal antibody, clone C11 (Cat # MAB1991).

This antibody recognizes a single 56 KDa band corresponding to human Keratin as confirmed by the position of molecular weight markers (not shown).

Approximately 100 ng of keratin from human epidermis (Sigma p/n K0253) was applied under reducing conditions to a pre-cast 4-20% iGel from Gradipore Inc.

A 1 : 400 dilution of Keratin monoclonal antibody, clone C11 was used for 2h followed by detection using a 1 : 5,000 dilution of IRDye™800 conjugated Goat-a-Mouse IgG [H&L] and visualization using the Odyssey® Infrared Imaging System developed by LI-COR.

IRDye is a trademark of LI-COR, Inc.

- Immunohistochemistry

- Immunofluorescence

Immunofluorescence microscopy using Keratin monoclonal antibody, clone C11 (Cat # MAB1991).

Confocal slices of HeLa cells are between 0.5 and 0.6 μm where the image is taken near the bottom of the cell.

- Immunoprecipitation

- Enzyme-linked Immunoabsorbent Assay

## Publication Reference

- [A panel of monoclonal antibodies to keratin no. 7: characterization and value in tumor diagnosis.](#)

Vojtěšek B, Stasková Z, Nenutil R, Bártková J, Kovarik J, Rejthar A, Bártek J.

Neoplasma 1990 Jan; 37(3):333.

- [Monoclonal antibodies against individual cytokeratins in the detection of metastatic spread.](#)

Kovarik J, Rejthar A, Lauerova L, Vojtesek B, Bartkova J.

International Journal of Cancer. Supplement 1988 Jan; 3:50.

Application: IHC-P, Human, Human bone-marrow samples, Human lymph-node specimens

- [The catalog of human cytokeratins: patterns of expression in normal epithelia, tumors and cultured cells.](#)

Moll R, Franke WW, Schiller DL, Geiger B, Krepler R.

Cell 1982 Nov; 31(1):11.