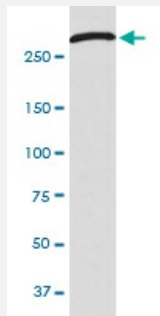


CHD4 monoclonal antibody, clone ABEI-3

Catalog # MAB19892 Size 100 uL

Applications



Western Blot (Cell lysate)

Western blot analysis of 293T cell lysate with CHD4 monoclonal antibody.

Specification

Product Description Rabbit monoclonal antibody raised against synthetic peptide of human CHD4.

Immunogen A synthetic peptide corresponding to human CHD4.

Host Rabbit

Reactivity Human

Form Liquid

Purification Affinity purification

Isotype IgG

Recommend Usage
 Flow Cytometry (1:50)
 Immunocytochemistry (1:50-1:200)
 Immunofluorescence (1:50-1:200)
 Western Blot (1:1000-1:5000)
 The optimal working dilution should be determined by the end user.

Storage Buffer In PBS, pH 7.4, 150mM NaCl, 0.02% sodium azide and 50% glycerol.

Storage Instruction

Store at -20°C for one year. After reconstitution, at 4°C for one month. It can also be aliquotted and stored frozen at -20°C for a longer time. Avoid repeated freezing and thawing.

Note

This product contains sodium azide: a POISONOUS AND HAZARDOUS SUBSTANCE which should be handled by trained staff only.

Applications

- Western Blot (Cell lysate)

Western blot analysis of 293T cell lysate with CHD4 monoclonal antibody.

- Immunocytochemistry

- Immunofluorescence

- Flow Cytometry

Gene Info — CHD4

Entrez GeneID[1108](#)**Protein Accession#**[Q14839](#)**Gene Name**

CHD4

Gene Alias

DKFZp686E06161, Mi-2b, Mi2-BETA

Gene Description

chromodomain helicase DNA binding protein 4

Omim ID[603277](#)**Gene Ontology**[Hyperlink](#)**Gene Summary**

The product of this gene belongs to the SNF2/RAD54 helicase family. It represents the main component of the nucleosome remodeling and deacetylase complex and plays an important role in epigenetic transcriptional repression. Patients with dermatomyositis develop antibodies against this protein. [provided by RefSeq]

Other Designations

Mi-2 autoantigen 218 kDa protein