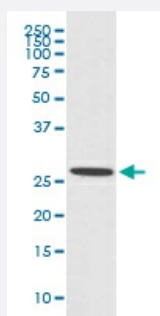


CDCA3 monoclonal antibody, clone IAF-3

Catalog # MAB19871 Size 100 uL

Applications



Western Blot (Cell lysate)

Western blot analysis of MCF-7 cell lysate with CDCA3 monoclonal antibody.

Specification

Product Description Rabbit monoclonal antibody raised against synthetic peptide of human CDCA3.

Immunogen A synthetic peptide corresponding to human CDCA3.

Host Rabbit

Reactivity Human

Form Liquid

Purification Affinity purification

Isotype IgG

Recommend Usage
Immunocytochemistry (1:50-1:100)
Immunofluorescence (1:50-1:100)
Western Blot (1:500-1:1000)
The optimal working dilution should be determined by the end user.

Storage Buffer In PBS, pH 7.4, 150mM NaCl, 0.02% sodium azide and 50% glycerol.

Storage Instruction Store at -20°C for one year. After reconstitution, at 4°C for one month. It can also be aliquotted and stored frozen at -20°C for a longer time. Avoid repeated freezing and thawing.

Note

This product contains sodium azide: a POISONOUS AND HAZARDOUS SUBSTANCE which should be handled by trained staff only.

Applications

- Western Blot (Cell lysate)

Western blot analysis of MCF-7 cell lysate with CDCA3 monoclonal antibody.

- Immunocytochemistry

- Immunofluorescence

Gene Info — CDCA3

Entrez GeneID	83461
---------------	-----------------------

Protein Accession#	Q99618
--------------------	------------------------

Gene Name	CDCA3
-----------	-------

Gene Alias	GRCC8, MGC2577, TOME-1
------------	------------------------

Gene Description	cell division cycle associated 3
------------------	----------------------------------

Omim ID	607749
---------	------------------------

Gene Ontology	Hyperlink
---------------	---------------------------

Gene Summary	C8 trigger of mitotic entry 1
--------------	-------------------------------

Other Designations	gene rich cluster, C8 trigger of mitotic entry 1
--------------------	--

Disease

- [Diabetes Mellitus](#)

- [Genetic Predisposition to Disease](#)