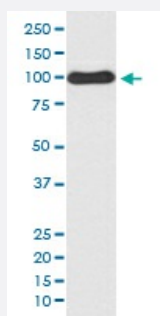


CDC5L monoclonal antibody, clone IOA-3

Catalog # MAB19868

Size 100 uL

Applications



Western Blot (Cell lysate)

Western blot analysis of HeLa cell lysate with CDC5L monoclonal antibody.

Specification

Product Description Rabbit monoclonal antibody raised against synthetic peptide of human CDC5L.

Immunogen A synthetic peptide corresponding to human CDC5L.

Host Rabbit

Reactivity Human

Form Liquid

Purification Affinity purification

Isotype IgG

Recommend Usage

- Immunocytochemistry (1:50-1:200)
- Immunofluorescence (1:50-1:200)
- Immunohistochemistry (1:50-1:200)
- Western Blot (1:500-1:2000)
- The optimal working dilution should be determined by the end user.

Storage Buffer In PBS, pH 7.4, 150mM NaCl, 0.02% sodium azide and 50% glycerol.

Storage Instruction

Store at -20°C for one year. After reconstitution, at 4°C for one month. It can also be aliquotted and stored frozen at -20°C for a longer time. Avoid repeated freezing and thawing.

Note

This product contains sodium azide: a POISONOUS AND HAZARDOUS SUBSTANCE which should be handled by trained staff only.

Applications

- Western Blot (Cell lysate)

Western blot analysis of HeLa cell lysate with CDC5L monoclonal antibody.

- Immunohistochemistry (Formalin/PFA-fixed paraffin-embedded sections)

- Immunocytochemistry

- Immunofluorescence

Gene Info — CDC5L

Entrez GeneID[988](#)**Protein Accession#**[Q99459](#)**Gene Name**

CDC5L

Gene Alias

CEF1, KIAA0432, PCDC5RP, dJ319D22.1, hCDC5

Gene Description

CDC5 cell division cycle 5-like (S. pombe)

Omim ID[602868](#)**Gene Ontology**[Hyperlink](#)**Gene Summary**

The protein encoded by this gene shares a significant similarity with Schizosaccharomyces pombe cdc5 gene product, which is a cell cycle regulator important for G2/M transition. This protein has been demonstrated to act as a positive regulator of cell cycle G2/M progression. It was also found to be an essential component of a non-snRNA spliceosome, which contains at least five additional protein factors and is required for the second catalytic step of pre-mRNA splicing. [provided by RefSeq]

Other Designations

CDC5 (cell division cycle 5, S. pombe, homolog)-like|CDC5-like|Cdc5-related protein|Cell division cycle 5, S. pombe, homolog-like|OTTHUMP00000016529|dJ319D22.1 (CDC5-like protein)

Disease

- [Celiac Disease](#)
- [Genetic Predisposition to Disease](#)